

Niigata University

An Introduction
2010/2011

Quick Facts

- Established: May 1949
- Type: Public (National University Corporation)
- President: GEJYO Fumitake
- Location: Niigata, Japan
- Number of Students: 12,676
(Undergraduate: 10,381 / Graduate: 2,295)
- Number of University Staff: 2,274
- Number of International Students: 374
- Student / Faculty Ratio: 11.5:1
- Annual Budget: JPY 63,909,000,000 (USD 710,100,000)
- Land: 6,229,294 m²
- Buildings: 459,141 m²

Semester Dates

- **First Semester (Spring Semester):**
April 1 – September 30
(Most classes start in early April and end in early August)
- **Second Semester (Fall Semester):**
October 1 – March 31
(Most classes start in early October and end in early February)

Organization

Faculties

- Humanities
- Education
- Law
- Economics
- Science
- Medicine
- Dentistry
- Engineering
- Agriculture

Graduate Schools

- Education
- Modern Society and Culture
- Science and Technology
- Medical and Dental Sciences
- Health Sciences
- Management of Technology
- Law School

University Medical and Dental Hospital

Brain Research Institute

Institute of Education and Student Affairs

Center for Transdisciplinary Research

University Library

Administration Bureau

- Strategy and Planning Office
- Intellectual Property Office
- Risk Management Office
- Health Administration Center
- International Exchange Support Center
- Public Relations Center
- Research Center for Natural Hazards and Disaster Recovery
- Center for Cooperative Research
- Public Collaboration Research Center
- Venture Business Laboratory
- Center for Academic Information Service
- Asahimachi Museum
- Radioisotope Center
- Center for Instrumental Analysis
- Asahimachi Laboratory of Radioisotope Research

Contents

Message from the President	01	Overseas Partner Institutions	12
Faculties / Graduate Schools / Professional Schools ...	02	Campus Map	14
University Hospital / Brain Research Institute / International Exchange Support Center	10	Access Information	16
Data	11	About Niigata City	17

Message from the President



Niigata University is located in the City of Niigata, a key metropolis on the Sea of Japan. Niigata is the only government ordinance–designated city on that coast and thus is the region’s leading municipality. The university is nestled between the Sea of Japan and the Echigo Plain. Off the coast is the picturesque island of Sado, and the Shinano River travels over the plain. The university boasts two campuses: the Ikarashi Campus and the Asahimachi Campus. With this magnificent natural environment, the two campuses offer an ideal setting for students to enjoy concentrating on their studies.

Niigata University boasts a long history and rich tradition, with the predecessor institutions of the university tracing back about 130 years. The school was inaugurated as Niigata University in 1949 under the new university system introduced in Japan soon after the end of World War II. Since then, the university has played a key role as a center of scholarship in the Japan Sea Rim region. With the incorporation of Japan’s national universities on

April 1, 2004, Niigata University became a national university corporation. Today our school is a large comprehensive university with nine faculties, five graduate schools, two professional schools, the Brain Research Institute, and the Niigata University Medical and Dental Hospital. Our student body numbers about 12,700, and our academic and administrative staff totals approximately 2,300.

To mark our change in status to a national university corporation, Niigata University adopted “autonomy and creation” as its guiding principle and “contributing to the solid development of the region and the world through education and research” as its objective. We promote university reform based on the following four fundamental goals to achieve our guiding principle and objective:

1. Education: Train people who can appropriately address the needs of the times and serve in a wide range of capacities by providing both a well-rounded general education and high-level specialized knowledge through a refined program of education.
2. Research: Promote creative research of value to the world and interdisciplinary research that makes the most of the university’s unique position as a comprehensive university, while carrying forward the intellectual assets passed down in traditional fields of learning.
3. Social Contribution: As a key education and research institute in the Japan Sea Rim region, support the development of the regional and international communities through healthcare services and joint activities through industry-government-academia partnerships.
4. University Administration: Undertake ongoing reform aimed at the optimal administration of the university’s resources to maintain our legitimacy as a university supported by the people of Japan.

Niigata University places the highest priority on education. Students not only delve deeply into their own fields of specialization, but they also gain the ability to think about issues comprehensively from a broad perspective. We aim to develop each student’s unique character by offering thorough-going education that features opportunities for hands-on practical experience. To satisfy students’ academic aspirations, we offer education programs that bring together general and specialized courses and we have introduced minor degree programs that certify a student has earned a certain number of credits on a specific topic or field of study.

Niigata University also places emphasis on international exchange. We are currently home to about 370 young people from nations around the world, including exchange students who come to our institution based on our exchange agreements with universities overseas. Because Niigata is located in Northeast Asia and is near Russia, our university is a distinctive hub for international academic exchange along the Sea of Japan.

With the cooperation of the university’s academic and administrative staff, I am committed to doing my utmost in every regard to ensure that all students have pride in studying at and graduating from our university.

We look forward to welcoming you to Niigata University.

GEJYO Fumitake
President of Niigata University

- : Course or Department under the School
- ◆ : Type of Degree offered by the School

Faculty of Humanities

● Humanities

◆ *Bachelor of Arts*

As a discipline which covers a very wide range of subjects from the study of literatures of all ages and cultures to the latest information media, the Faculty of Humanities provides a richly diverse and comprehensive curriculum on the study of humankind and cultures while maintaining a tradition of liberal arts. The faculty aims to provide students with sound specialist knowledge and a broad perspective that will enable them to respond to the issues and demands of modern society in their future careers. The faculty offers six major programs: Psychology and Human Studies, Field Studies, History, Japanese and Asian Languages and Cultures, Western Languages and Cultures, Representation and Media Culture.



Faculty of Education

- Schoolteacher Education
- Network of Learning Society
- Living Sciences
- Health and Sport Sciences
- Artistic Environment

- ◆ *Bachelor of Education*
- ◆ *Bachelor of Human Sciences*
- ◆ *Bachelor of Living Sciences*
- ◆ *Bachelor of Health and Sport Sciences*
- ◆ *Bachelor of Music*
- ◆ *Bachelor of Fine Arts*

With a history of providing training to schoolteachers from the time of the former Niigata Teachers College, the Faculty of Education is an interdisciplinary, comprehensive faculty with a teaching staff hailing from a wide range of fields. In addition to providing training for school teachers, the faculty is responsible for training personnel who can provide support for lifelong learning to people in the community in various fields.

In the Schoolteacher Education course, students can acquire through practical methods basic competencies required of schoolteachers in teaching as a profession. The other four courses develop specialist knowledge and skills, and problem-solving abilities in various areas relating to teaching in a learning society, lifelong education, living sciences, health and sport sciences, and the arts, among others, to prepare students as future educators who will play active roles in local communities.



Faculty of Law

● Law

◆ *Bachelor of Laws*

A general principle of the Faculty of Law is to promote cultivating human resources of "all-around ability" which is capable of responding to a social trend of "informatisation", "regionalization" and "internationalisation". In order to execute this principle, the faculty lays out a wide variety and distinctive character of curriculum as follows: Providing courses of fundamental subjects seeking to establish "legal mind" (legal ways of thinking) and "legal literacy" (understanding legal systems and concepts, and operating legal skills), as well as offering a diverse range of lectures and seminars, including courses of small-group instruction with a view to having mutual and multidirectional interaction.



Faculty of Economics

- Economics
- Business Administration

◆ *Bachelor of Economics*

Students in the Faculty of Economics acquire a solid foundation in economics and business administration and skills in identifying issues. In the Economics Department, emphasis is placed on the development of skills that enable students to identify issues in a globalized society and economy based on economic theory as well as historical factors and current conditions of various regions. In the Business administration Department, the emphasis is on training professionals with sound management skills centered on proficiency in business management, accounting, and public management. To realize these educational objectives, the Faculty of Economics also engages in various research projects. It also opens its doors to the local community by offering flexible study arrangements including evening classes to working persons aspiring to continue their education and to the international community by accepting a large number of overseas students.



Faculty of Science

- Mathematics
- Physics
- Chemistry
- Biology
- Geology
- Environmental Science

◆ *Bachelor of Science*

Students in the Faculty of Science explore the workings of nature from the microscopic world of the physical properties of matter to the origins of life and earth as well as space, and they utilize fundamental knowledge and theory in broad areas of application such as solving energy problems of the next generation, developing frontier technology and medical technology, and preserving and regenerating the natural environment. The faculty sees its role as contributing to the body of knowledge of science by shedding light on these areas, and to achieve this objective strives to train students as outstanding people with a solid basic knowledge in their profession, sound judgment skills that reflect a broad, multidisciplinary perspective, skills in application and in identifying issues, and a strong social consciousness and global consciousness. The Faculty of Science has excellent resources and facilities for providing both fundamental and international educational and research environment capable of responding to the needs and demands of a new generation.



- : Course or Department under the School
- ◆ : Type of Degree offered by the School

Faculty of Medicine

School of Medicine

◆ *Doctor of Medicine*

Of the research conducted at the School of Medicine, the school's brain and kidney research in particular are leading the world. Translational research, which exploits findings obtained in basic research, is also being vigorously pursued on site in clinical medicine. Organ transplants and gene-repair therapy are among the areas being pursued. The Faculty of Medicine has also been contributing to the local community in areas such as regional medical care and preventive medicine through its ongoing cooperation with local government institutions, medical associations and other organizations. In recent years, the school has even expanded its cooperation in medicine and medical exchanges with foreign countries including Russia, China and a number of other Asian countries, and the United States.



School of Health Sciences

◆ *Bachelor of Science in Nursing*
 ◆ *Bachelor of Health Sciences*

The School of Health Science consists of three majors – Nursing, Radiological Technology, and Medical Laboratory Science – and places emphasis on the training of professionals who will contribute to the local community in the future by engaging in work related to medical care, health, and welfare.



Faculty of Dentistry

- Dentistry
- Oral Health and Welfare

◆ *Doctor of Dental Surgery*
 ◆ *Bachelor of Oral Health and Welfare*

As a center for dental medicine and care in the Japan Sea Coast, the Faculty of Dentistry together with the University Medical and Dental Hospital offers students opportunities to pursue new areas of dental medicine and care and trains dentists who will play instructional roles in various areas of dentistry in the 21st century.

The Department of Oral Health and Welfare aims to train specialists with a high-level knowledge of oral care, eating, and swallowing functions who can comprehensively think and manage health care, medical care and welfare. Thus, we propose to develop the appropriate environment that enables elderly who require long-term care and persons with disabilities to benefit from comprehensive health care and social welfare services.



Faculty of Engineering

- Mechanical and Production Engineering ◆ *Bachelor of Engineering*
- Electrical and Electronic Engineering
- Information Engineering
- Biocybernetics
- Chemistry and Chemical Engineering
- Civil Engineering and Architecture
- Materials Science and Technology



Since the establishment of Niigata University, the Faculty of Engineering has been providing education with an emphasis on basic skills and basic scholarship. To respond flexibly to the changes of the times, fundamental knowledge is the most vital element. A faculty with a long-standing reputation for developing high-level technologies and educating young engineers in these, the Faculty of Engineering of Niigata University has been the launch pad of a large number of eminent people in the field today in Japan. The Faculty of Engineering has superior educational and research facilities among other universities in the country and also has a highly competent and dedicated teaching staff. In this environment, all students are able to develop new knowledge, skills, and creativity while engaging in frontier research. The Faculty of Engineering is committed to nurturing the development of engineers and researchers who will possess comprehensive knowledge, skills, and creativity to enable them to deal with all kinds of issues in a new era.

Faculty of Agriculture

- Agrobiology ◆ *Bachelor of Agriculture*
- Applied Biological Chemistry
- Production and Environment Science



Today's agricultural science encompasses not only academic areas directly linked to the production and distribution of food and timber materials but is a comprehensive science that also includes areas such as life science, advanced biotechnology, food and nutritional science, and environmental conservation. Through a substantial curriculum and research works in agricultural science, the Faculty of Agriculture educates bioscience and field science experts with superior problem solving skills and a sense of ethics.

In all departments, particular programs are placed on experiment and practical training as well as graduate research and care is taken to ensure that every student can effectively learn specialized subjects through practical education. The Faculty of Agriculture also plays an active role in contributing to the region largely through the Field Center for Sustainable Agriculture and Forestry and in disseminating information through the faculty's Agriculture Forum and other means. Niigata University also takes advantage of its geographical position by actively incorporating and exchanges with universities in the Northeast Asian area and Southeast Asia.

Graduate Schools

- : Course or Department under the School
- ◆ : Type of Degree offered by the School

Graduate School of Education

- Master's Program of School Education ◆ *Master of Education*
- Master's Program of School Subjects

The Graduate School of Education aims to provide candidates with sound research skills in scholarship and art for school education purposes and a high level of teaching expertise and insight in their areas of specialization to enable them to adequately and appropriately deal with various issues they will encounter in education as practitioners.

The Master's Program of School Education provides training in clinical research and education to equip candidates with the necessary skills to deal with various problems they will encounter in classroom teaching. The Master's Program of School Subjects provides instruction and research in subject content and its application in educational methods. As a program for acquiring an academic degree with a focus on the practical study of school education, this graduate program welcomes currently practicing teachers and has established the One-year Course for Experienced Teachers to enable candidates to acquire their master's degree in one year.



Graduate School of Modern Society and Culture

- Master's Program of Contemporary Cultures ◆ *Master of Arts*
- Master's Program of Co-operativism in Legal, Economic and Social Affairs ◆ *Master of Law*
- Master's Program of Social and Cultural Sciences ◆ *Master of Public Administration*
- Master's Program of Contemporary Management Practices ◆ *Master of Economics*
- Doctoral Program of Personal and Social Development ◆ *Master of Public Management*
- Doctoral Program of Regional Cultures and Sociology ◆ *Master of Business Administration*
- Doctoral Program of Global Community ◆ *Master of Philosophy*
- ◆ *Doctor of Philosophy*
- ◆ *Doctor of Philosophy in Literature*
- ◆ *Doctor of Laws*
- ◆ *Doctor of Philosophy in Economics*
- ◆ *Doctor of Philosophy in Education*

The Graduate School of Modern Society and Culture is a graduate school which offers a comprehensive doctoral degree program founded on the fundamental principle of harmonious coexistence. Focusing on contemporary issues, candidates consider humankind with its diverse societies and cultures in a context where they deepen their understanding of each other through their involvement with the natural environment. Against this backdrop, they will attempt to create new social and cultural systems that will enable humankind to coexist in harmony.

To achieve this basic principle, the program is divided into first stage and latter stage doctoral courses, and is structured into a framework where the candidates receive assistance in their "tasks" from cooperating specialists in humanities, law, economics, and educational science.



Graduate School of Science and Technology

- Master's Program of Fundamental Sciences
 - Master's Program of Advanced Materials Science and Technology
 - Master's Program of Life and Food Sciences
 - Master's Program of Environmental Science and Technology
 - Master's Program of Mathematics, Electronics and Information Engineering
 - Master's Program of Human Sciences and Assistive Technology
 - Doctoral Program of Fundamental Sciences
 - Doctoral Program of Advanced Materials Science and Technology
 - Doctoral Program of Life and Food Sciences
 - Doctoral Program of Environmental Science and Technology
 - Doctoral Program of Information Science and Engineering
- ◆ *Master of Philosophy*
 - ◆ *Master of Science*
 - ◆ *Master of Engineering*
 - ◆ *Master of Agriculture*
 - ◆ *Doctor of Philosophy*
 - ◆ *Doctor of Philosophy in Science*
 - ◆ *Doctor of Philosophy in Engineering*
 - ◆ *Doctor of Philosophy in Agriculture*



The Graduate School of Science and Technology is an independent, integrated type graduate school with Master's (first two-year term) and Doctoral (latter three-year term) programs, with special emphasis on consistent postgraduate education during a continuing five-year term. The educational principle is not restricted to the preconceptions of the fields. The teaching staffs for different fields cooperate to educate and guide students. In addition to majoring in a specific field, the educational principle of the Graduate School encourages students to pursue interdisciplinary studies to acquire broad-field based knowledge, and to develop simultaneously their creative thinking abilities. Consequently, the aim of educational and research activities at the Graduate School is not restricted to educating young researchers only. We also aim at high-level education of students for private enterprises and industries, which will be able to solve problems in their field of research, and to thereby meet the increasing demands of society in terms of advanced and diversified science, culture and technology.

- : Course or Department under the School
- ◆ : Type of Degree offered by the School

Graduate School of Health Sciences

- Master's Program of Health Sciences
- Doctoral Program of Health Sciences
- ◆ *Master of Health Sciences*
- ◆ *Doctor of Philosophy (Health Sciences)*

Founded on the fundamental principle of developing the theory and practice of the Health Science through education and research rich in creativity and sharing the results widely in the community and the region, the Graduate School of Health Science launched its Master Degree program in April 2004 and its Doctoral Degree program in April 2007.

The Graduate School of Health Science, based on the three Departments in the School of Health Science of the Faculty of Medicine, consist of three departments of the Graduate School: Nursing, Radiological Technology, and Medical Technology. While maintaining mutual collaboration under the Health Science, each department aims to nurture excellent educators and capable researchers as well as advanced medical professionals who can aptly respond to various issues relating to Health Science. Furthermore, the Postgraduate School also aims to cast research ability upon medical professionals in practices of workplace and enhancing their roles as specialists of leading by providing recurrent educational training to professionals in the area of Health Science. In addition to a general selection process through an entrance examination, special consideration is given to people already in the work force. The Postgraduate School has a system of study that enables students to learn while working by attending the classes conducted in both day and night.



Graduate School of Medical and Dental Sciences

- Master's Program of Biomedical Sciences
- Master's Program of Oral Health and Welfare Science
- Doctoral Program of Molecular and Cellular Medicine
- Doctoral Program of Biological Functions and Medical Control
- Doctoral Program of Community Disease Control
- Doctoral Program of Oral Life Science
- ◆ *Master of Biomedical Science*
- ◆ *Master of Oral Health and Welfare Science*
- ◆ *Doctor of Philosophy (Medical Science)*
- ◆ *Doctor of Philosophy (Dental Science)*
- ◆ *Doctor of Philosophy*

The Graduate School of Medical and Dental Sciences removed the traditional divisions between the departments of Medical Science and Dental Science as well as barriers between courses to provide education and research capable of responding to changes in the environment which the study of medicine and medical care of today must serve. The school was established to train researchers who can play leading roles in advanced life science research in the 21st century, to train doctors and dentists who can provide advanced medical care in areas such as organ transplant and genetic treatment based on research results, and to train professional medical staff with a high level of expertise including public health practitioners who can perform the practical activities of preventive medicine in local and international communities.

The doctoral program in the graduate school is divided into five majors according to area of study: Molecular and Cellular Medicine, Biological Functions and Medical Control, Community Disease Control, Oral Life Science, and Oral Health and Welfare Science. The Master's Program is divided into two majors: Biomedical Science, and Oral Life and Welfare Sciences.



Professional Schools

- : Course or Department under the School
- ◆ : Type of Degree offered by the School

Management of Technology

- Department of Management of Technology ◆ *Master of Management of Technology*

The Graduate School of Management of Technology was established in April 2006 to train professionals capable of business creation based on technology originating in Niigata and capable of increasing its international competitiveness.

Technology involves various processes from research and development, manufacturing, sales, and after sales services in the flow of development from the planning of products and services to sales of these. However, sound corporate strategies are essential for technology to take off successfully and the meaning of technology only begins to take shape through dialogue with society. In other words, in the large framework of society the critical challenge does not necessarily lie in technology or management as separate entities but in the “management of technology.” In addition, technology as information is intellectual property. It is also an information resource that becomes material for social development. Through theory and practical exercises based on these perspectives, students are able to arrive at a clear understanding as to how to link the three dimensions of technology, organizations, and human beings in the process of technological innovation. Students who master content and acquire practical skills in these areas are awarded the professional degree Master of Technology.



Law School

- Professional Degree Program of Law ◆ *Juris Doctor*

Niigata Law School is a professional graduate school which provides education and training for legal professionals including attorneys, public prosecutors, and judges as highly trained specialists in their professions. The guiding educational principle of this graduate school is to provide professional education of a high standard to legal professionals “who can earn the trust and meet the expectations of people in the local community by consistently providing them with sound legal services.”

The teaching staff, which consists of researchers, attorneys, prosecutors, and judges, conduct two-way and multidirectional lessons which cater to small groups of students as a means of bridging theory with practice. The professional degree of Juris Doctor is awarded to graduates who have completed both legal theory and clinical legal education (legal clinics, etc.).



University Medical and Dental Hospital

As a hospital for advanced treatment serving Niigata Prefecture and the surrounding areas, the Niigata University Medical and Dental Hospital provides progressive medical treatment of a very high standard in both dental and medical care. The facilities comprise 23 departments including 19 departments of medicine and four departments of dentistry and a total of 810 beds.

The hospital also serves as a place of learning for undergraduate students and a place of postgraduate clinical training for students of the Faculty of Medicine and Faculty of Dentistry as well as a place of training for lifelong education for people involved in various areas of health care. The hospital also serves as a place for research in clinical medicine and dentistry not only in Japan at a national level but also at an international level with frequent exchanges between Japanese and foreign researchers taking place there on an ongoing basis.

The new central medical care building which will house the Operation Center, the radiology department, and the Emergency Critical Care Center was completed in 2009.

Following the hospital's guiding principle "to respect life and the dignity of the individual by providing high-quality medical care, and to train medical practitioners with a deep sense of compassion," we are committed to promoting the further development of the university hospital that will play an instrumental role in the 21st century in medical care that will be made available to society at large.



Brain Research Institute

The Brain Research Institute was established to conduct scientific and applied research on the brain and brain diseases and is Japan's only university-affiliated research institute. The Brain Research Institute also has two affiliated facilities: the Center for Integrated Human Brain Science, which investigates the higher functions of the brain using non-invasive technology centering on high magnetic resonance systems, and the Center for Bioresource-based Researches, which provides support for research by managing brain disease resources such as brain samples, model animals, and a genetic database. The institute, which has two departments which handle brain diseases (Department of Neurosurgery and Department of Neurology), has been cited as the only research facility of its kind as a facility. The institute is also known for its enormous store of brain disease specimens. Furthermore, as a facility where scientists actively pursue organically integrated fundamental and clinical research, the Brain Research Institute has been achieving many groundbreaking results for many years.



International Exchange Support Center

The International Exchange Support Center offers a variety of Japanese-language programs for international students at all levels of proficiency (from complete beginners to advanced learners). The center, which plays a pivotal role in the university in promoting academic and student exchange with universities overseas, also oversees special programs for exchange students and provides international students with guidance and advice on living in Japan and other concerns.



Excursion to Sado Island



Folk dancing parade



International music festival

Number of Students

As of May 1, 2010

Faculty/School	Total
Faculty of Humanities	1,037
Faculty of Education	1,625
Faculty of Law	814
Faculty of Economics	1,403
Faculty of Science	894
Faculty of Medicine	1,346
Faculty of Dentistry	347
Faculty of Engineering	2,209
Faculty of Agriculture	706
Subtotal	10,381
Graduate School of Education	109
Graduate School of Modern Society and Culture	231
Graduate School of Science and Technology	1,282
Graduate School of Health Sciences	81
Graduate School of Medical and Dental Sciences	445
Graduate School of Management of Technology	44
Law School	103
Subtotal	2,295
Total	12,676

* The figures above include the number of students who belong to the predecessor Faculties or Schools, and do not include the number of non-degree-seeking students.

Number of University Staff

As of May 1, 2010

Position	Total
President, Board Member	9
Professor	370
Associate Professor	374
Lecturer	76
Assistant Professor	272
Assistant	8
Schoolteacher	110
Administrative and Technical Staff	1,055
Total	2,274

Number of International Students

As of May 1, 2010

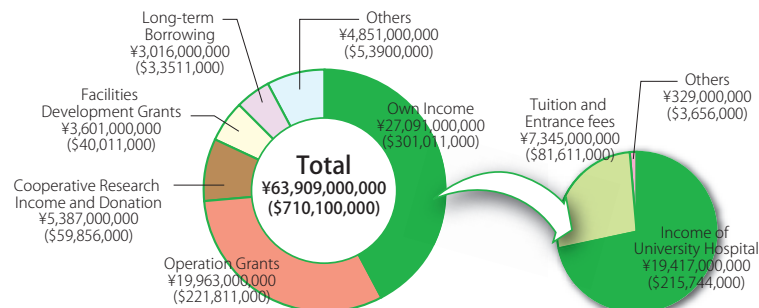
Country/Region	Total
Asia	
Bangladesh	9
China	207
Taiwan	37
Indonesia	3
Korea	40
Malaysia	18
Mongolia	8
Myanmar	4
Philippines	6
Thailand	2
Viet Nam	6
Subtotal	340
Pacific	
Australia	2
Subtotal	2
Europe	
Albania	2
France	6
Germany	2
Lithuania	1
Russia	9
United Kingdom	1
Subtotal	21
Latin America	
Bolivia	1
Chile	1
Cuba	1
Nicaragua	1
Peru	1
Subtotal	5
Middle East	
Egypt	2
Yemen	2
Subtotal	4
Africa	
Kenya	1
Nigeria	1
Subtotal	2
Total	374

* The figures above include the number of non-degree-seeking students.

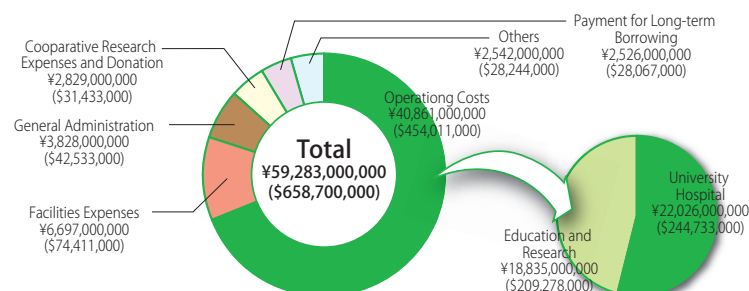
Finances

FY2009

Revenues



Expenditures



Overseas Partner Institutions

Niigata University has concluded agreements with overseas institutions to promote academic and student exchange.



● : Inter-university exchange ○ : Inter-faculty/school exchange

Bangladesh

- Bangabandhu Sheikh Mujib Medical University
- City Dental College
- Dhaka Dental College
- University Dental College

China

- Beijing Normal University
- Beijing Normal University Zhuhai
- Beijing Union University
- China Agricultural University
- China University of Geosciences (Beijing)
- China University of Geosciences (Wuhan)
- Dalian University of Technology
- East China Normal University
- East China University of Science and Technology
- Fudan University
- Harbin Institute of Technology
- Harbin Medical University
- Harbin Normal University
- Heilongjiang University
- Hubei Medical College
- Hunan University
- Jilin University
- Kunming Medical College
- Minzu University of China
- Nanjing Institute of Geology and Palaeontology, Chinese Academy of Sciences
- Northeast Agricultural University
- Northeast Normal University

- Ocean University of China
- Peking University
- Qiqihar University
- Renmin University of China
- Shanghai Second Medical University
- South China Normal University
- Tsinghua University

Taiwan

- Chung-Yuan Christian University
- Feng Chia University
- I-Shou University
- National Central University
- National Changhua University of Education
- National Sun Yat-sen University
- National Yang-Ming University
- Providence University
- Soochow University
- Southern Taiwan University
- Wenzao Ursuline College of Languages

Indonesia

- Bandung Institute of Technology
- Bogor Agricultural University
- Gadjah Mada University
- University of Indonesia

Malaysia

- National University of Malaysia (UKM)

Mongolia

- Mongolian State University of Agriculture

Myanmar

- Ministry of Health, Myanmar

Philippines

- Manila Central University
- Mindanao State University-Iligan Institute of Technology
- University of the East
- University of the Philippines

Republic of Korea

- Hanyang University
- Inha University
- Kangnung National University
- Kangwon National University
- Kyungpook National University
- Pukyong National University
- Pusan National University
- Seoul National University
- Sungkyunkwan University
- Yeungnam University

Sri Lanka

- University of Peradeniya

Thailand

- Chiang Mai University
- Prince of Songkla University
- Surindra Rajabhat University
- Thammasat University

Australia

- Deakin University
- University of Newcastle
- University of Sydney
- University of Technology, Sydney

Austria

- Johannes Kepler University

Croatia

- University of Split

France

- University of Bordeaux 3
- University of Nantes

Germany

- Bielefeld University
- University of Munster
- Otto-von-Guericke University Magdeburg

Hungary

- University of Debrecen and Institute of Nuclear Research of the Hungarian Academy of Sciences

Netherlands

- Wageningen University and Research Centre

Romania

- Carol Davila University of Medicine and Pharmacy

Russia

- Far Eastern State Medical University
- Far Eastern State University
- Far Eastern State University of Humanities
- Khabarovsk State Academy of Economics and Law
- Krasnoyarsk State Medical Academy
- Saint-Petersburg State University
- Vladivostok State Medical University

U.K.

- University of Bristol
- University of Sheffield
- University of Wales

Canada

- University of Alberta
- University of British Columbia
- University of New Brunswick

United States

- Loma Linda University
- Louisiana State University
- State University of New York at Fredonia
- University of California, San Francisco
- University of Illinois at Chicago Campus
- University of Minnesota
- University of Oregon

Mexico

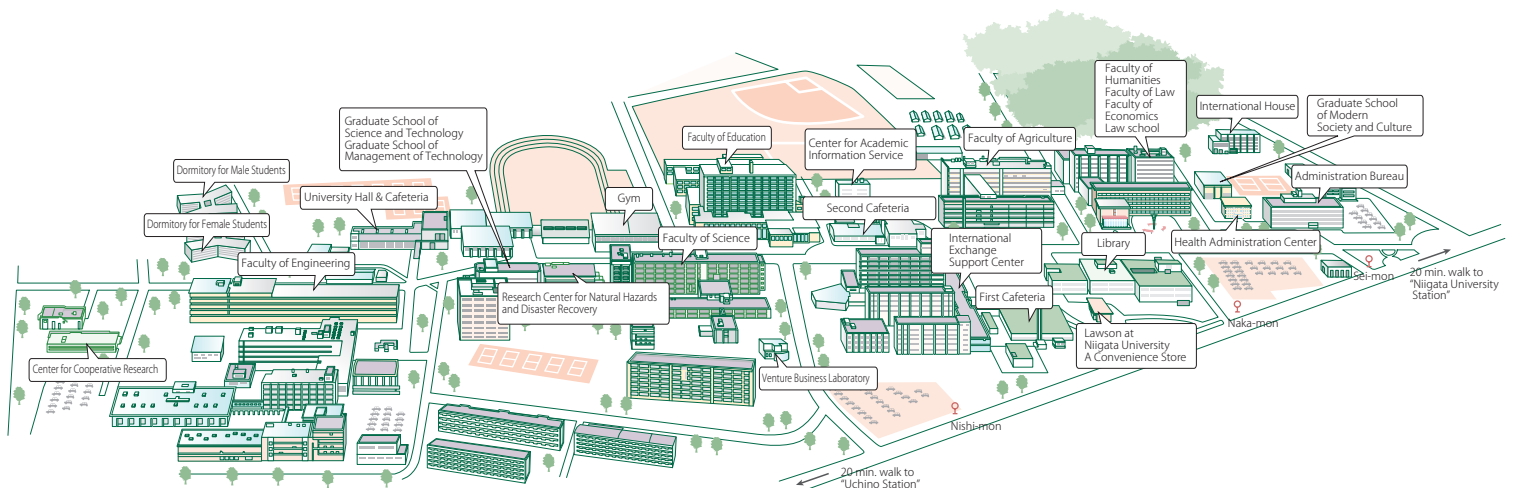
- Coahuila Autonomous University

Egypt

- Cairo University

Campus Map

Ikarashi Campus



Faculties/Institutions at Ikarashi Campus:

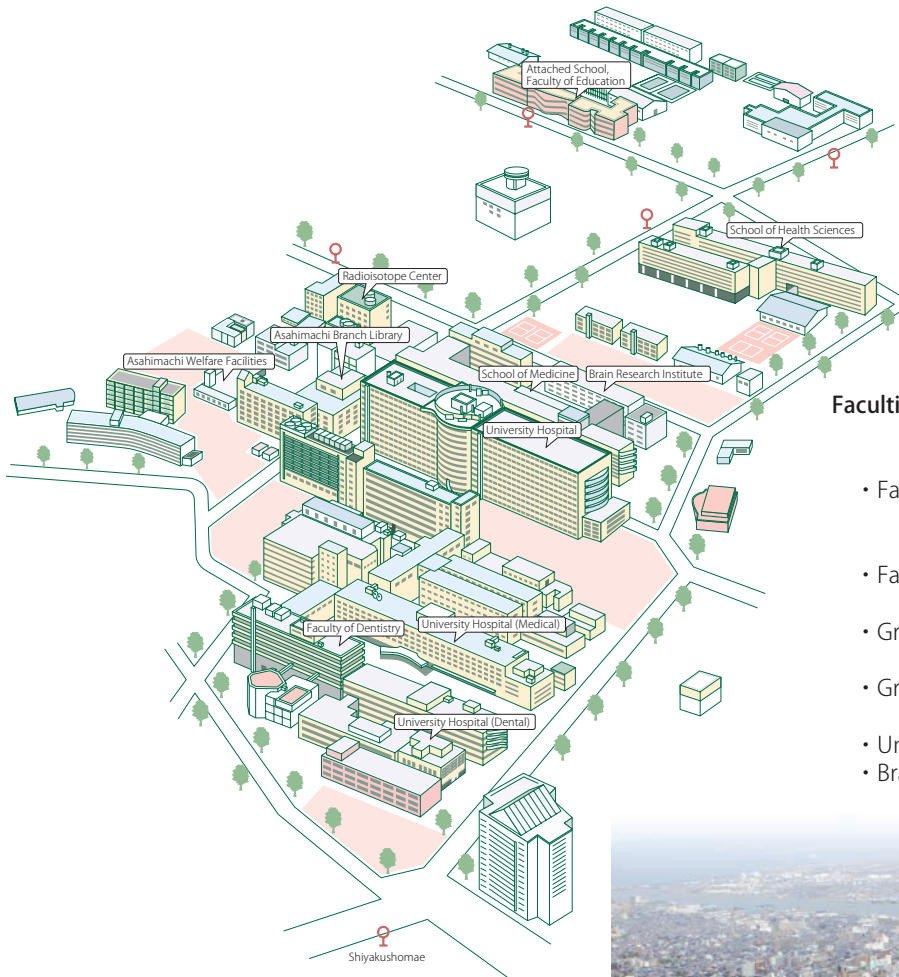
- Faculty of Humanities
- Faculty of Education
- Faculty of Law
- Faculty of Economics
- Faculty of Science
- Faculty of Engineering
- Faculty of Agriculture

- Graduate School of Education
- Graduate School of Modern Society and Culture
- Graduate School of Science and Technology
- Graduate School of Management of Technology
- Law School

- Head Office/Administration Bureau
- International Exchange Support Center



Asahimachi Campus

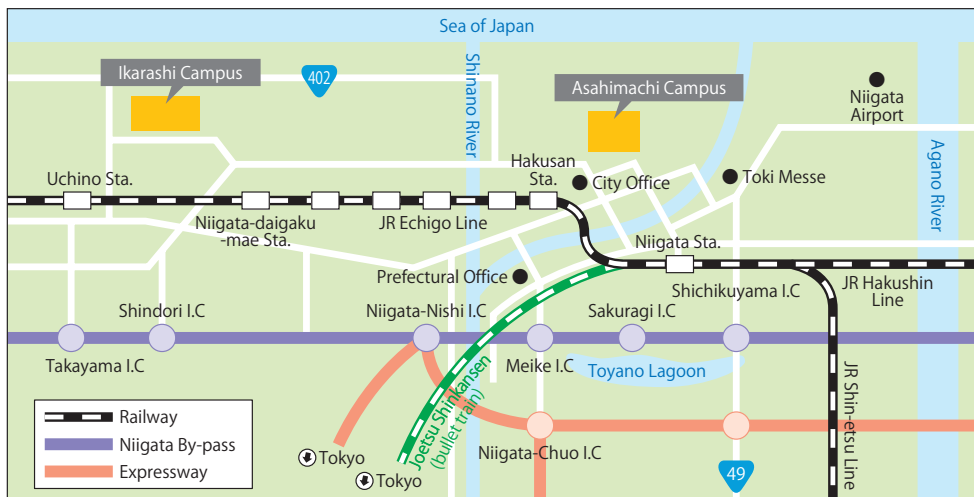
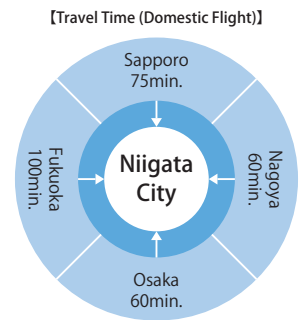
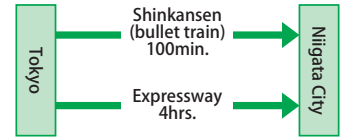


Faculties/Institutions at Asahimachi Campus:

- Faculty of Medicine
 - School of Medicine
 - School of Health Sciences
- Faculty of Dentistry
- Graduate School of Medical
and Dental Sciences
- Graduate School of Health Sciences
- University Medical and Dental Hospital
- Brain Research Institute



Access Information



Transportation Guide

Ikarashi Campus	
Japan Railway (Echigo line)	Niigata Station → (22min.) → Niigata Daigakumae Station → (15min.walk) →
Bus (For Niigata Univ.)	Niigata Station → (45min.) → Niigata Daigaku Seimonmae → (1min.walk) → Ikarashi Campus
Taxi	Niigata Station → (30min.) →

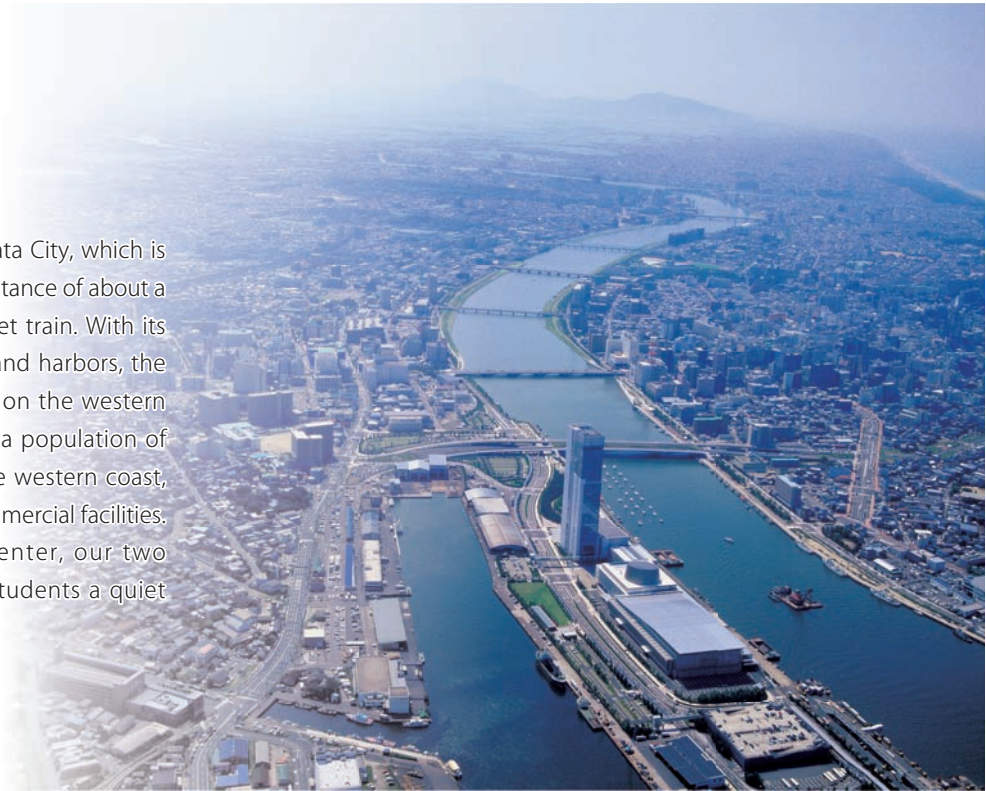
Asahimachi Campus	
Japan Railway (Echigo line)	Niigata Station → (5min.) → Hakusan Station → (10min.walk) →
Bus (For Shinanomachi)	Niigata Station → (15min.) → Shiyakusyomae → (3min.walk) → Asahimachi Campus
Taxi	Niigata Station → (10min.) →

Niigata Airport → Niigata Station	
Bus (For Niigata Station)	Niigata Airport → (30min.) → Niigata Station
Taxi	Niigata Airport → (20min.) →

About Niigata City

Photography by courtesy of Niigata Visitors & Convention Bureau

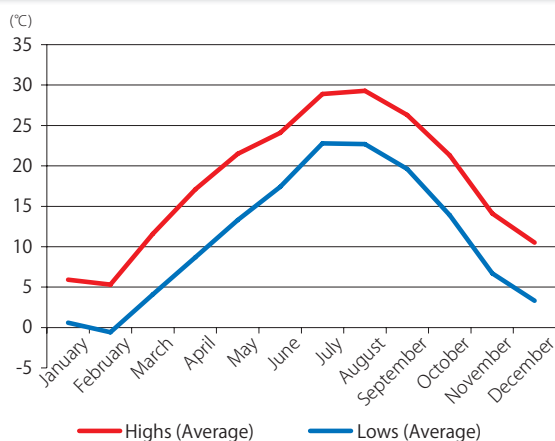
Niigata University is located in Niigata City, which is situated 300 km north of Tokyo, a distance of about a 2-hour ride on the shinkansen bullet train. With its network of expressways, airports, and harbors, the city acts as a transportational hub on the western coast of Japan's main island. With a population of 800,000, it is the largest city on the western coast, and has a variety of cultural and commercial facilities. Situated off the bustling city center, our two campuses offer researchers and students a quiet environment with lush greenery.



Known as Japan's top rice producer, Niigata prides on its delicious rice and rice products including sake. Exquisite brands of sake produced by over 90 local breweries garner popularity within and out of the country.



A beautiful sunset can be seen from the beach that extends along the coast. Visitors also enjoy savoring fresh seafood from the Sea of Japan.



— Climate in Niigata —

The Japanese archipelago stretches from north to south. In the north is the island of Hokkaido with a subarctic climate. In the south are the islands of Okinawa with a subtropic climate. In Niigata, located about midway, one can distinctly feel the changes of four distinct seasons. Although Niigata is known for its heavy snowfalls, snow cover is minimal in Niigata City where the university campuses are. Niigata has year-round precipitation.

NIIGATA UNIVERSITY

8050 Ikarashi 2-no-cho, Nishi-ku, Niigata-shi 950-2181, Japan

Tel: +81-25-262-6246 Fax: +81-25-262-7519 E-mail: kokusai@adm.niigata-u.ac.jp

<http://www.niigata-u.ac.jp/>