





# Message from the President

Niigata University has a long history and rich tradition, with its predecessor organizations dating back about 140 years. Since its official inauguration in May 1949, Niigata University has played a key role as a center of education and research in Japan.

Niigata University has developed into a university that offers a comprehensive range of academic fields, including the humanities and social sciences, natural sciences, medical and dental sciences, and much more. It currently has approximately 13,000 students, and 3,000 academic and administrative staff members.

Niigata University endeavors to promote distinctive, world-class research within each of the academic fields it pursues. It also strives to cultivate students' global competence by developing in each of them a high level of expertise and refined sensibilities needed to tackle the challenges of the 21st century while playing an active role in a wide range of fields throughout the world.

With “Autonomy and Creativity” as its guiding principle, Niigata University aspires to contribute to world peace and development through education, research and social contributions, primarily in the East Asian Rim region where it is located.

Blessed with an abundance of nature, our campuses offer an ideal environment for education and research. Niigata University will continue to contribute to the advancement of culture and the well-being of all of mankind as we look toward the future.

*Sugata T.*

**Sugata Takahashi** , M.D., Ph.D.  
President of Niigata University



## NIIGATA UNIVERSITY

Prospectus

### CONTENTS

#### Message from the President

- 2 Message from the President  
President of Niigata University Sugata Takahashi

#### Academics

- 4 Graduate School of Modern Society and Culture
- 5 Graduate School of Education
- 6 Faculty of Humanities  
Faculty of Education
- 7 Faculty of Law  
Faculty of Economics
- 8 Graduate School of Science and Technology
- 10 Faculty of Science  
Faculty of Engineering
- 11 Faculty of Agriculture
- 12 Graduate School of Medical and Dental Sciences
- 13 Graduate School of Health Sciences
- 14 Faculty of Medicine
- 15 Faculty of Dentistry
- 16 Graduate School for Management of Technology  
Law School

#### Affiliated Facilities

- 17 Niigata University Medical & Dental Hospital  
Brain Research Institute  
Research Institute for Natural Hazards and Disaster Recovery

#### Overseas Partner Institutions

#### Campus Services

#### Application Information

#### Maps and Directions

#### About Niigata City





# Academics

## Graduate Programs

## Graduate School of Modern Society and Culture

### Fast Facts:

- **Enrollment:** 143
- **Gender ratio:** 51.3% female, 48.3% male
- **Percentage of International Students:** 48.3%
- **Student-to-faculty ratio:** 1 to 1

### Degrees Offered:

- **Master of Arts**
- **Master of Laws**
- **Master of Public Administration**
- **Master of Economics**
- **Master of Public Management**
- **Master of Business Administration**
- **Master of Philosophy**

of the world, thereby cultivating specialists and researchers with specialized knowledge of those subjects, as well as systematically fostering an advanced and multifaceted understanding of the Japanese language and Japanese culture and developing individuals able to contribute to the further development of international relations, especially in East Asia.

### Major of Society of Law and Politics

This major systematically imparts advanced knowledge, and interdisciplinary methods of analysis, related to legal systems and public administration, thereby cultivating an ability to discover and pursue problems related to peace, human rights and the environment and developing specialists and researchers with specialized knowledge of legal systems and public administration.

### Major of Economics and Management

This major systematically imparts advanced knowledge, and interdisciplinary methods of analysis, related to economics and management, thereby cultivating an ability to discover and pursue problems related to the multilayered and complex economic phenomena involved in today's increasingly globalized society and developing specialists and researchers with specialized knowledge in economics and management.



### Program Overview:

#### Master's Degree Programs

##### Major of Contemporary Cultural Studies

This major systematically imparts advanced knowledge, and interdisciplinary methods of analysis, related to information, culture, philosophy, psychology, and domestic and health sciences, thereby cultivating an ability to discover and pursue issues related to contemporary culture and developing specialists and researchers with specialized knowledge in information culture, philosophy, psychology, and domestic and health sciences.

##### Major of Social and Cultural Studies

This major systematically imparts advanced knowledge, and interdisciplinary methods of analysis, related to the languages, histories and cultures of Asia, including Japan, and of other parts

### Fast Facts:

- **Enrollment:** 99
- **Gender ratio:** 56.4% female, 43.4% male
- **Percentage of International Students:** 46.4%
- **Student-to-faculty ratio:** 1 to 1

### Degrees Offered:

- **Doctor of Philosophy**
- **Doctor of Philosophy in Literature**
- **Doctor of Laws**
- **Doctor of Philosophy in Economics**
- **Doctor of Philosophy in Education**

researchers with advanced and specialized knowledge, and an ability to solve problems, related to the languages, histories and cultures of Japan, Asia, the West, and elsewhere.

### Major of Multisocial Studies

This division cultivates an ability to diversely and comprehensively analyze and solve problems, related to the legal, political and economic systems and structures in the societies of East Asia, including Japan, and in other parts of the world, from the coexistence-promoting perspective of mutual understanding and mutual progress, and develops specialists and researchers with advanced and specialized knowledge, and an ability to solve problems, related to law and economics.



### Doctoral Degree Programs

#### Major of Human Development Studies

This division cultivates an ability to analyze and solve problems, related to human development in the home, school and elsewhere, from the perspectives of the living environment, culture and education, and develops specialists and researchers with advanced and specialized knowledge, and an ability to solve problems, related to human development.

#### Major of Multicultural Studies

This division cultivates an ability to diversely and comprehensively analyze and solve problems, related to the languages, histories and cultures of Asia, including Japan, and of various other parts of the world, from the coexistence-promoting perspective of mutual understanding and mutual progress, and develops specialists and

### Degree Courses Taught in English

Master's Program of Society of Law and Politics International Society

\*Degrees Offered: Master of Law(LL.M), Master of Public Administration, Master of Philosophy

## Graduate School of Education

### Master's Degree Program in Education Practice and Development (Division of Teaching)

This new Master's program started from April 2016.

### Degrees Offered:

- **Master of Teaching (Master's Degree in Teaching)**

### Courses:

- **Education Practise course**
- **School Management course**



### Program Overview:

The Graduate School of Education's (GSE) Division of Teaching will provide future school leaders with a solid grounding in theories of education along with advanced classroom teaching skills. It will also equip new teachers with leadership qualities and the skills to develop concepts and strategies that will help them to be an influential leader in the building of a school community. The GSE's Division of Teaching aims to play a leading role in the training of teachers, and to contribute to raising the level of schools and communities' teacher strengths.

Particular features of the Program

1. Issues at the schools where Program participants actually work will be used as class materials. This will allow students to learn based on a close interplay between theory and practice.
2. Participants will study at several schools where graduate students work. This will expose them to the range of actual conditions that they will encounter at different kinds of schools.
3. Equipped in this way with knowledge of the range of problems that teachers regularly encounter in the classroom and by working in partnership with teachers. Program participants will be able to acquire an innate ability to provide detailed learning support and general life direction support matched to every child's individual circumstances.



### Faculty of Humanities

#### Fast Facts:

- **Enrollment:** 987
- **Gender ratio:** 62.4% female, 37.6% male
- **Student-to-faculty ratio:** 14.5 to 1

#### Degrees Offered:

- **Bachelor of Arts**

#### Courses:

- **Psychology and Human Studies Program**
- **Sociology and Regional Culture Program**
- **History Program**
- **Japanese and Asian Languages and Linguistic Cultures Program**
- **Western Languages and Cultures Program**
- **Representation and Media Culture Program**

#### Program Overview:

As a discipline that covers a very wide range of fields, from traditional culture (folklore, history, and literature) to modern media culture (manga and anime), philosophy and gender studies, the Faculty of Humanities provides a comprehensive curriculum for the study of the humanities in the tradition of a liberal arts education.

The Faculty of Humanities has vital stuffs to offer education to students, as specialists in various fields of human science researches. Many international students completing programs at the Faculty of Humanities advance into the Graduate School of Modern Society and Culture (Master's Program and Doctor's Program) at Niigata University to enhance the researches.



### Faculty of Education

#### Fast Facts:

- **Enrollment:** 1,564
- **Gender ratio:** 57.2% female, 42.8% male
- **Student-to-faculty ratio:** 15.5 to 1

#### Degrees Offered:

- **Bachelor of Education**

#### Courses:

- **Schoolteacher Education Course**
  - School Education Program
  - Subject Education Program

#### Program Overview:

The Faculty of Education's Schoolteacher Education Course has two programs: the School Education Program, and School Subjects Education Program.

In the School Education Program, students' learning focuses on education theory and educational psychology, providing training for principally those teachers who will work in elementary schools and special education schools.

In the School Subjects Education Program, the focus of students' learning is the content and the methods of teaching school subjects, providing training for principally those teachers who will work in elementary and junior high schools. Each program will give students the innate qualities of a teacher as well as the skills expected of a teaching professional, based on a curriculum designed in keeping with its particular focus.

In particular, in order to cultivate the practical skills that teaching professionals need to solve modern teaching problems, the programs compose an education course that emphasizes practical learning, such as a curriculum incorporating in-the-field experience built around student teaching placements in all four years of study.



### Faculty of Law

#### Fast Facts:

- **Enrollment:** 788
- **Gender ratio:** 43.9% female, 56.1% male
- **Student-to-faculty ratio:** 23.9 to 1

#### Degrees Offered:

- **Bachelor of Laws**

#### Courses:

- **Corporate and Legal Work Course**
- **Public Administration and Legal Work Course**
- **International Affairs and Legal Work Course**

#### Program Overview:

A general principle of the Faculty of Law is to promote cultivating human resources of "all-around ability" which is capable of responding to a social trend of "informatization," "regionalization" and "internationalization."

In order to execute this principle, the faculty lays out a wide variety and distinctive character of curriculum as follows: Providing courses of fundamental subjects seeking to establish "legal mind" (legal ways of thinking) and "legal literacy" (understanding legal systems and concepts, and operating legal skills), as well as offering a diverse range of lectures and seminars, including courses of small-group instruction with a view to having mutual and multidirectional interaction.



### Faculty of Economics

#### Fast Facts:

- **Enrollment:** 1,382
- **Gender ratio:** 31.4% female, 68.6% male
- **Student-to-faculty ratio:** 30.7 to 1

#### Degrees Offered:

- **Bachelor of Economics**

#### Courses:

- **Department of Economics**
  - Modern Economics Course Model
  - Global Economy Course Model
- **Department of Management**
  - Business Administration Course Model
  - Public Policy and Management Course Model
  - Accounting and Taxation Course Model

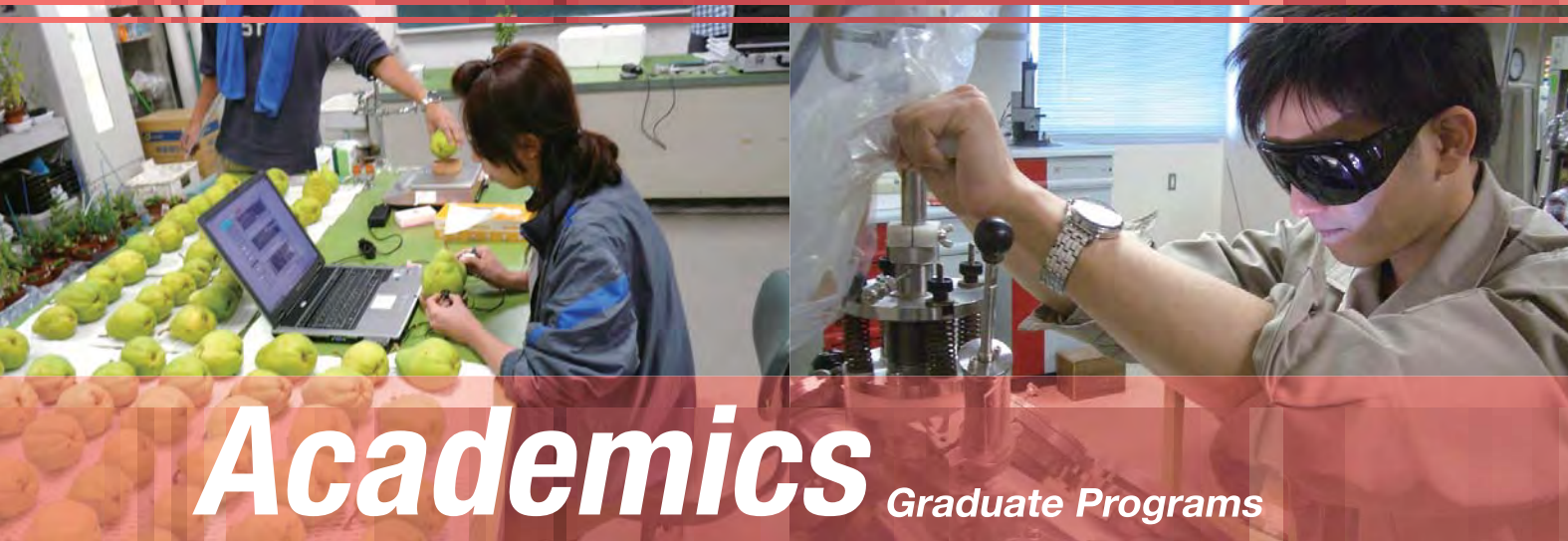
#### Program Overview:

Students in the Faculty of Economics acquire a solid foundation in economics and business administration and skills in identifying issues. In the Department of Economics, emphasis is placed on the development of skills that enable students to identify issues in a globalized society and economy based on economic theory as well as historical factors and current conditions of various regions. In the Department of Management, the emphasis is on training professionals with sound management skills centered on proficiency in business management, accounting, and public management.

To realize these educational objectives, the Faculty of Economics also engages in various research projects. It also opens its doors to the local community by offering flexible study arrangements including evening classes to working persons aspiring to continue their education and to the international community by accepting a large number of overseas students.







# Academics

## Graduate Programs

## Graduate School of Science and Technology

### Fast Facts:

- **Enrollment:** 977
- **Gender ratio:** 15.1% female, 84.9% male
- **Percentage of International Students:** 2.1%
- **Student-to-faculty ratio:** 3.5 to 1

### Degrees Offered:

- **Master of Philosophy**
- **Master of Science**
- **Master of Engineering**
- **Master of Agriculture**

### Program Overview:

#### Master's Degree Programs

##### Fundamental Sciences

Based on an educational system systematically composed of educators in the related fields of physics, chemistry, and mathematics, we provide education and conduct research at the leading edge, from the level of the universe to microscopic elementary particles. Our aim is to nurture individuals who can play an important role in society with basic understanding of the characteristics of materials and mechanisms of nature and various skills for conducting experiments, as well as to nurture educators and scientists who can effectively use the perceptions and originality they gained from the experience of leading-edge research.

##### Advanced Materials Science and Technology

Faculty members are professionals in materials science and engineering, chemistry, and mechanical engineering. We provide education and conduct research on creation of advanced materials through interdisciplinary integration of technology; design, development, and assessment of new functional substances and new materials; chemical development of high-functionality materials; environmentally harmonious production processes; and the science of mechanical infrastructure, production systems, and material control. We nurture individuals who can identify problems and who have advanced, comprehensive scientific knowledge of intellectual materials research and development, applied development of commercial products, and development of materials suitable for disposal and recycling of resources used in our society.

##### Electrical and Information Engineering

We foster individuals with extensive, specialized knowledge and ability to apply the knowledge in one of the fields of mathematical science, information science, information and communications, electrical and electronic engineering, mechanical engineering, or medical engineering. We cultivate students to have a breadth of view, a high standard of humanity and ethics, and ability to communicate effectively and to play an active role in the world as professionals engaging in intellectual and creative work, such as education, research, development, design, manufacturing, planning, and management, with a high standard of expertise. We nurture them to contribute to creating a safer and healthier world and to the development of the industrial world.

##### Life and Food Sciences

Covering a broad disciplinary area from basic biology to agriculture and applied science in related industries and based on the awareness of the modern trend of genome to post-genome life sciences, we train students to be able to fundamentally understand life phenomena and to be a pioneer in a variety fields for development of new technology and improvement of regional industries and the environment. We welcome students who show strong interest in "food and agriculture" and in "harmony with the environment," regardless of their fields of specialization in undergraduate education.

##### Environmental Science and Technology

We train students to develop their originality and become capable of exploring the environment and structure of broad areas, from the land of Niigata facing the Sea of Japan and one of the regions with the heaviest snowfalls in Japan, to northeast Asia and the whole globe; of understanding, from a global perspective, the interrelation between the geosphere, hydrosphere, and biosphere and the human society; and of creating urban and rural environment from the natural environment based on the experience of leading-edge research. We also foster individuals with an international outlook who can communicate effectively with scientists from other countries.

### Fast Facts:

- **Enrollment:** 213
- **Gender ratio:** 21.6% female, 78.4% male
- **Percentage of International Students:** 16.9%
- **Student-to-faculty ratio:** 1 to 1.3

### Degrees Offered:

- **Doctor of Philosophy**
- **Doctor of Science**
- **Doctor of Engineering**
- **Doctor of Agriculture**

### Doctoral Degree Programs

#### Fundamental Sciences

Continuing from the education and research in the master's program, we further provide education and conduct research to explore the laws of various natural structures and elucidate mysteries. We aim to nurture scientists with a breadth of view who can, at their own initiative, address various issues related to elucidation of the mechanisms of reaction of substances, exploration of new materials, and elucidation of various mathematical phenomena as well as carry on original research.

#### Advanced Materials Science and Technology

The contents of education and research in this program consist of interdisciplinary integration of technologies to create advanced materials. It includes: design, development, and evaluation of new functional materials; chemical synthesis of high-functionality materials; development of environmental-friendly chemical production and disposal/recycling processes; and the basic science of mechanical engineering, mechanical production systems, and material control. The education is offered by professionals in materials science and engineering, chemistry, and mechanical engineering. The students will get ability to identify problems and solve them with advanced, comprehensive scientific knowledge of materials, from basic research to create new materials, through application and production, to harmless disposal or recycling to establish sustainable society.

#### Electrical and Information Engineering

We nurture scientists and professionals who can theoretically elucidate complex, diverse phenomena in the field of electrical and information engineering, which forms a part of the core of science and technology in the 21st century, who can analyze complex phenomena, who can design, operate, and develop technology, functions, parts, and systems based on electrical and information engineering in ways useful to society, and who have a high level of expertise and breadth of view in regard to electrical and information engineering.

#### Life and Food Sciences

To elucidate not only the basic principles of life but also life phenomena at the levels of molecules to individuals and their applications in a wide range of fields as well as to address the serious social issues related to the changes in the global environment and the issues of food, we train students to be able to fundamentally understand life phenomena and to be a pioneer in a variety fields for development of new technology and improvement of regional industries and environment. We welcome students who show strong interest in the wonders of life and in sustainable production of living creatures in harmony with the environment.

#### Environmental Science and Technology

We train students to develop their originality and become capable of exploring the structure of broad areas, from the globe to the land of Niigata where Niigata University is located, facing the Sea of Japan in the corner of northeast Asia with a mild climate and heavy snowfalls, and understanding, from a global perspective, the interrelation between the geosphere, hydrosphere, and biosphere and the human society, and creating urban and rural environment from the natural environment. We also promote advanced, interdisciplinary, multidisciplinary research.

### Degree Program Taught in English

Graduate School of Science and Technology has been implementing distinctive international education programs; Double Degree Program and Higher Agricultural Specialist Program for the Russian Federation Far East. These programs are designed to enable the participating students to successfully earn a degree from Niigata University entirely in English.

Double Degree Program students study at two universities to earn a separate degree from each university.

Higher Agricultural Specialist Program for the Russian Federation Far East aims to nurture higher agricultural specialists who contribute in solving various problems faced in Russian Federation Far East.





# Academics

## Undergraduate Programs

### Faculty of Science

#### Fast Facts:

- **Enrollment:** 887
- **Gender ratio:** 22.9% female, 77.1% male
- **Student-to-faculty ratio:** 9.3 to 1

#### Degrees Offered:

- **Bachelor of Science**

#### Departments:

- Department of Mathematics
- Department of Physics
- Department of Chemistry
- Department of Biology
- Department of Geology
- Department of Environmental Science



#### Program Overview:

Students in the Faculty of Science engage in the exploration of how nature works: from the microscopic world of the physical properties of matter to the origins of life, and covering a range spanning the Earth as well as space. In doing so, they utilize fundamental knowledge and theory in a variety of applied fields, including those involved with solving the energy problems of the next generation, developing cutting-edge and medical technologies, and preserving and regenerating the natural environment.

The faculty sees its role as being one of contributing to the body of knowledge of science by shedding light on these areas, and in order to achieve this objective strives to train students to be outstanding people with a solid grounding in their profession, sound judgment skills that reflect a broad, multidisciplinary perspective, skills in application and in identifying issues, and a strong social and global consciousness. The Faculty of Science has excellent resources and facilities for providing both fundamental and international education and a research environment capable of responding to the needs and demands of a new generation.



### Faculty of Engineering

#### Fast Facts:

- **Enrollment:** 2,185
- **Gender ratio:** 12.0% female, 88.0% male
- **Student-to-faculty ratio:** 18.0 to 1

#### Degrees Offered:

- **Bachelor of Engineering**



#### Program Overview:

At the Faculty of Engineering, students gain the fundamental knowledge of science and technology necessary for the development of useful infrastructural elements in a variety of fields of society and industry based on science-related subjects. Graduates are highly sought after in the business community and find a wide range of opportunities to play active roles in society.

The faculty provides education designed to cultivate “*Kougakuryoku*.” Its focus is on educating students in basic science, equipping them with fundamental academic skills in their fields of specialization, and developing their ability to apply the knowledge and skills acquired. As engineering involving science and technology aims to find applications in society and industry, simply developing an ability to learn leaves you ill-equipped to deal with complicated situations in the real world. In this context, a practical and comprehensive ability of creation is also required. The term “*Kougakuryoku*” represents a concept developed by the Faculty of Engineering that combines these two abilities.

#### Departments:

- Department of Mechanical and Production Engineering
- Department of Electrical and Electronic Engineering
- Department of Information Engineering
- Department of Biocybernetics
- Department of Chemistry and Chemical Engineering
- Department of Civil Engineering and Architecture
- Department of Materials Science and Technology

The Faculty of Engineering promotes world-class research projects such as thermochemical hydrogen production by concentrated solar heat, environmental monitoring of the earth by fully polarimetric radar, and so on. In the field of civil engineering and architecture, projects on designing a good urban landscape are highly regarded. Furthermore, the faculty conducts collaborative researches with leading Asian universities through an international conference regularly held so as to globalize university education and develop global competency of students.



### Faculty of Agriculture

#### Fast Facts:

- **Enrollment:** 709
- **Gender ratio:** 47% female, 53% male
- **Student-to-faculty ratio:** 10.6 to 1

#### Degrees Offered:

- **Bachelor of Agriculture**

#### Departments:

- Department of Agrobiology
- Department of Applied Biological Chemistry
- Department of Production and Environmental Science



#### Program Overview:

Today, not only does agricultural science encompass academic areas directly linked to the production and distribution of food and timber products, but it is also a comprehensive science that includes areas such as life science, advanced biotechnology, food and nutritional science, and environmental conservation. Through a substantial curriculum and research works in agricultural science, the Faculty of Agriculture educates bioscience and field science experts with superior problem solving skills and a sense of ethics.

In all departments, particular programs are placed on experiment and practical training as well as graduate research and care is taken to ensure that every student can effectively learn specialized subjects through practical education. The Faculty of Agriculture also plays an active role in contributing to the region largely through the Field Center for Sustainable Agriculture and Forestry and in disseminating information through the faculty's Agriculture Forum and other means. Niigata University also takes advantage of its geographical position by actively incorporating and exchanges with universities in the Northeast Asian area and Southeast Asia.







## Graduate School of Medical and Dental Sciences

### Fast Facts:

- **Enrollment:** 490
- **Gender ratio:** 37% female, 63% male
- **Percentage of International Students:** 3%
- **Student-to-faculty ratio:** 1.6 to 1

### Degrees Offered:

- **Master of Biomedical Science**
- **Master of Oral Health and Welfare Science**
- **Doctor of Philosophy**  
(Oral Health and Welfare Science)
- **Doctor of Philosophy (Medical Science)**
- **Doctor of Philosophy (Dental Science)**
- **Doctor of Philosophy**

many different fields. With this in mind, the Graduate School has introduced a multifaceted instructional system that features main and assistant lecturers. In addition to the 2-year Biomedical Science Master's Program and the 4-year Doctoral Programs (Molecular and Cellular Medicine, Biological Functions and Medical Control, Community Disease Control, and Oral Life Science), a newly established Doctoral Program of Oral Health and Welfare Science (Master's/Ph.D Program) aims to train researchers and advanced professionals who can promote interdisciplinary research in fields such as health/medical care and social welfare focusing on the oral health. The Graduate School takes advantage of existing within a university to carry out multifaceted education and research with the cooperation of teaching staff from the Medical and Dental Hospital, the Brain Research Institute, the Institute of Nephrology, the Graduate School of Science and Technology, and the Humanities, Education, Law, Science, and Engineering faculties.

Furthermore, in response to appeals from local and global communities, the Graduate School is proactive in its acceptance of exchange students, for whom it has created a full course of study. With the developments, expansion, and diversification in medicine and dentistry, the Graduate School has also seen an increase in the number of students from a variety of

### Program Overview:

The Graduate School of Medical and Dental Sciences removes the traditional barriers between medicine, dentistry, and scholarship to carry out education and research able to respond to changes in the environment surrounding medicine and medical care. It seeks to train researchers who will engage in the 21st-century, cutting-edge life science research, doctors and dentists capable of providing advanced medical care such as organ transplants and gene therapy based on the results of that research, and advanced medical professionals such as public health practitioners able to be active in preventative medicine in both local and global communities.

The features of the Graduate School include interdisciplinary education unifying medicine and dentistry, with an international awareness and proactive intake of working adults and exchange students. In order to train persons with a wealth of creativity and problem-solving skills, it is essential to have many instructors from



occupations looking to take the next step in their careers. Online education has been introduced in order to provide an environment that enables learning for those who work during the day, and the system provides lectures during the day and evening to allow for a longer and more flexible access to education and research.

The Graduate School's postgraduate course research fields feature kidney/kidney disease research, nerve/brain research, infectious disease research, and oral health/life science research.

The kidney/kidney disease research involves basic research in three fundamental areas--structural pathology, functional control, cellular physiology--at the Institute of Nephrology, the only one of its kind at a Japanese national university. The Graduate School is the leader for the Human Proteome Project and the Human Kidney and Urine Proteome Project. In addition, clinical research into kidney disease and exploratory research also takes place at the institute with coordination among three clinical fields--rheumatology, pediatrics and urology--and two related courses of functional cellular medicine and at the nephrology treatment center.

The nerve/brain research features a wide variety of studies in fundamentals of the nervous system and diseases, coordinating the relevant basic and clinical fields in cooperation with the adjoining Brain Research Center, also the only one of its kind at a Japanese national university.

The infectious disease research is carried out in five basic fields, with research into influenza transmission based on the mechanism behind the appearance of drug resistance in the influenza virus and the medical applications of Japan's first Geographical Information System as well as international joint research on ascertaining its spread.

The oral health/oral life science research considers health from the principles of "restoring and maintaining the functions required to live as a human" such as "eating," "swallowing," "speaking," and "making facial expressions," and makes oral cavity functionality, not just "teeth," the centerpiece of its comprehensive education, research, and clinical oral life science.

### Degree Courses Taught in English

Each student will be allocated an English-speaking academic supervisor who will oversee their research.

## Graduate School of Health Sciences

### Fast Facts:

- **Enrollment:** 83
- **Gender ratio:** 71% female, 29% male
- **Percentage of International Students:** 2%
- **Student-to-faculty ratio:** 1.3 to 1

### Degrees Offered:

- **Master of Health Sciences**
- **Doctor of Philosophy (Health Sciences)**

### Departments:

- **Nursing**
- **Radiological Technology**
- **Medical Technology**

### Program Overview:

The Graduate School of Health Sciences has as its basic philosophy the conducting of comprehensive research relating to health and diseases of the mind and body, as well as broadly contributing to health preservation/disease and disability prevention in both individuals and groups and the improvement of the happiness and welfare of humankind by returning the results of the aforementioned research at the social/economic/regional level.

The research objective of the Graduate School of Health Sciences is to make a contribution to supporting healthcare and preventing disease in citizens by developing new technologies relating to health sciences and organizing interdisciplinary fields that the health sciences have. In the field of nursing, both qualitative and quantitative research are underway, with active engagement in support for regional healthcare and international medical treatment and healthcare. The research is not only concerned with bedside treatment of patients; it covers an extremely

wide range including research into health management for healthy individuals and research into how lifestyle and environment pertain to health. From the dressing of wounds to psychological care, all research is independent, as there are skill and quality discrepancies and each requires a different level of expertise.

However, a feature is that, as shown during disaster assistance, the results of the research are all made use of and work together at every level, from on-site acute-phase nursing to chronic phase nursing, and consequently all research is in support of regional individual healthcare. Furthermore, through the development of new technology/tests from the viewpoint of health science, the Radiological Technology and Medical Technology fields are conducting research that contributes to medical treatment and prevention of disease, and a feature of that research is that the accumulation of empirical research will lead to the acquisition of new knowledge, which will then be returned to local communities and society at large.



### Degree Courses Taught in English

Each student's research will be guided by his/her English-speaking academic supervisor.



## Faculty of Medicine

### [ School of Medicine ]

#### Fast Facts:

- **Enrollment: 775**
- **Gender ratio: 27% female, 73% male**
- **Student-to-faculty ratio: 4.1 to 1**

#### Degrees Offered:

- **Doctor of Medicine**

medicine, is also vigorous, as evidenced by the leading-edge medical treatments such as organ transplants and gene therapy that take place at the university hospital.

In terms of regional society, the school is putting strength behind clinical medicine and preventative medicine, coordinating with administrative organs, medical institutions and medical associations, and contributing to the improvement of medical care, health preservation and welfare. The school is also active internationally, being engaged in lively cross-cultural exchange in the fields of medical science and medical treatment with the United States, Russia, China, and other Asian countries such as Myanmar and Mongolia.

#### Program Overview:

The school's aim in its founding is the "training of highly competent medical care workers that respect humanity and provide well-rounded medical care." At the School of Medicine and Graduate School of Medical and Dental Sciences a great number of global researches take place and above all, they lead the world in research relating to the brain and kidneys. Translational research, which applies the results of basic medical research to clinical



### [ School of Health Sciences ]

#### Fast Facts:

- **Enrollment: 687**
- **Gender ratio: 76% female, 24% male**
- **Student-to-faculty ratio: 10.9 to 1**

#### Degrees Offered:

- **Bachelor of Science in Nursing**
- **Bachelor of Health Sciences**

#### - Nursing

Students in the Nursing field are trained to make contributions to fulfilling lifestyles and improvements in the quality of life for all people, including patients. Students are provided with high-level expertise and skills so that they can cope with sophisticated medical care and increasingly complex and diversified nursing work.

#### - Radiological Technology

This field aims to produce radiological technologists and researchers who can handle the progress of radiological technology, having acquired specialist expertise/skills pertaining to imaging using x-rays or radio isotopes, radiation therapy and radiation management, as well as imaging using ultrasonic waves and magnetic resonance phenomena.

#### - Medical Technology

In this field, students will study the basic knowledge behind current medical science and medical care, and learn about specialist theory and skills for clinical examinations in order to accurately comprehend information that can be obtained from living organisms. The field trains specialist professionals in the fields of medical technology and life by cultivating in them the creativity and spirit of inquiry required for drug development and medical research, while also providing them with an extensive education from an international viewpoint and a rich sense of humanity.



## Faculty of Dentistry

#### Fast Facts:

- **Enrollment: 356**
- **Gender ratio: 65% female, 35% male**
- **Student-to-faculty ratio: 2.6 to 1**

### [ Department of Dentistry ]

#### Degrees Offered:

- **Doctor of Dental Surgery**

#### Program Overview:

The Faculty of Dentistry together with the university hospital offers students opportunities to pursue new areas of dental medicine and care and trains dentists who will play instructional roles in various areas of dentistry in the 21st century. At the Faculty of Dentistry, the conventional learning framework mainly focused on "teeth" has been revised to a perception of dentistry as oral hygiene, and the objective is the training of individuals who can be future leaders in the field of dentistry. The education offered is practical and focuses on independence and creativity in order to train creative and considerate dentists with the ability to find a solution when faced with difficult situations.

The curriculum at the Department of Dentistry sees 1st-year students study subjects relating to general education at the Ikarashi Campus together with students from other faculties while also experiencing dental treatment on location at the university hospital. From the 2nd year, the centre of both learning and lifestyle shifts to the Asahimachi Campus. In addition to subjects involving advanced English and natural science experiments, lectures on specialized subjects are also held--including those on Biochemistry, Materials Science, Structural Embryology and Human Anatomy--where students learn about various physical and chemical phenomena that occur in living organisms. In their 3rd and 4th years, students study specialized dentistry subjects compiled by a lesson coordinator while also commencing practical training on dummies in order to acquire the techniques for treatment. The practical training using dummies is conducted in small groups, each with its own instructor, making one-on-one guidance possible. Furthermore, the Faculty of Dentistry at Niigata University is the first such faculty in Japan to conduct practical training using mannequins that employ computer simulation; thus, before students treat actual patients at the hospital, they experience an even more practical form of training. Lectures in related areas of medicine such as internal medicine and external medicine also commence. Students who progress to their 5th year learn the theory and techniques required to comprehensively diagnose and treat the variety of diseases they will encounter in actual clinical dental work. From May in each student's 5th year, preparatory clinical training begins, with principal clinical training commencing from October and lasting roughly one year. The principal clinical training involves participatory clinical training dealing with actual patients and under the guidance of an expert instructor, with students studying the basic techniques and acquiring the readiness required to be a dentist.



### [ Department of Oral Health and Welfare ]

#### Degrees Offered:

- **Bachelor of Oral Health and Welfare**



#### Program Overview:

The Department of Oral Health and Welfare was newly established in 2004 as Japan's first educational institution training dental hygienists through a 4-year university course. It was founded with the objective of training specialists with special expertise relating to "Oral care and Eating (feeding/swallowing)," and able to comprehensively handle health maintenance, medical care and welfare. The department offers a unique curriculum, the first of its kind in Japan, that makes it possible after graduation to be eligible for both the Dental Hygienist and Certified Social Worker national accreditation examinations.



# Academics

## Professional Programs

### Graduate School for Management of Technology

#### Fast Facts:

- **Enrollment:** 36
- **Gender ratio:** 17% female, 83% male
- **Percentage of International Students:** 17%
- **Student-to-faculty ratio:** 3 to 1

#### Degrees Offered:

- **Master of Management of Technology**

#### Program Overview:

The Graduate School for Management of Technology is a professional school that provides education in the evenings and on weekends, primarily for adults with work experience, with the aim of fusing knowledge of the social and natural sciences. Accordingly, the School is staffed by faculty with a wealth of experience in industry who provide comprehensive practical training through case studies, group work and technical visits with a view to building students' ability to excel in decision-making situations.

A major characteristic of the School is that it positions a graded program comprising a Core Program that forms the backbone of technology management learning and an Advanced Program that provides frontier businesses - seeds for the future - as the main pillar of its educational curriculum, and the fact that it establishes focus areas linked to issues faced by companies in the Niigata region and allocates educational fields to each of these focus areas.



Note: The Graduate School of Management of Technology will no longer accept new student applicants for its programs as of the 2017-18 academic year.

### Law School

#### Fast Facts:

- **Enrollment:** 12
- **Gender ratio:** 33.3% female, 66.7% male
- **Student-to-faculty ratio:** 0.8 to 1

#### Degrees Offered:

- **Juris Doctor**

#### Program Overview:

The Law School is a professional school which provides education and training for legal professionals including attorneys, public prosecutors, and judges as highly trained specialists in their professions. The guiding educational principle of this school is to provide professional education of a high standard to legal professionals "who can earn the trust and meet the expectations of people in the local community by consistently providing them with sound legal services."

The teaching staff, which consists of researchers, attorneys, prosecutors, and judges, conduct two-way and multidirectional lessons which cater to small groups of students as a means of bridging theory with practice. The professional degree of Juris Doctor is awarded to graduates who have completed both legal theory and clinical legal education (legal clinics, etc.)



Note: The Law School stopped accepting new student applicants as of the 2015-16 academic year.

# Affiliated Facilities

### Niigata University Medical & Dental Hospital

Niigata University Medical & Dental Hospital is a regional, function-specific hospital serving Niigata Prefecture and the surrounding areas with a total of 34 departments (30 medical and 4 dental) and 825 beds, and provides high-level and advanced medical treatment in the twin areas of medical and dental care. It also functions as a training location for students from the Faculty of Medicine and the Faculty of Dentistry, and as a place of study for those engaged in postgraduate clinical training and others involved in all kinds of health care. Its scope extends beyond national boundaries as a research location for clinical medicine/dentistry at the international level, with an active

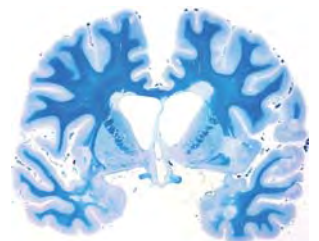
exchange of research with foreign researchers taking place. Niigata University Medical & Dental Hospital is aiming to become a university hospital able to offer the medical treatment available to society in the 21st century, and to move forward based on its philosophy of "paying the highest regard to human life and personal dignity, providing superior quality medical care, and fostering medical professionals with a rich sense of humanity."



### Brain Research Institute

The Brain Research Institute (BRI) was established in 1967 in order to elucidate scientific principles relevant to the brain function and mechanisms of brain diseases. It is the sole human brain-related research institute out of all the national universities' institutes in Japan. BRI has invaluable resources for human brain science. Neuropathological specimens accumulated by the Department of Pathology and the Center for Bioresource-based Research constitute one of the most extensive collections among the world, which can be recognized as an asset for all humanity. Based on these neuropathological resources, the Ministry of Education, Culture, Sports, Science and Technology (MECSST) selected BRI as one of the advanced collaborative research centers in 2010, and a total of 243 types of collaborative research have been performed since then. The Center for Integrated Human Brain Science (CIHBS) of BRI was established in 1995 as one of the eight original centers of

excellence (COE) produced by MECSST. The final goal of CIHBS is to know the self, elucidating neural substrates of the human mind. "The Brain Science of Water Molecules" project verified the important roles of water molecules in the brain function, and the succeeding "The Brain Science of Consciousness" project has been under way in CIHBS since 2011. BRI was re-elected as the advanced collaborative research center in 2015, and will launch new collaborative projects with researchers around the world, ranging from the clarification of pathomechanisms of human brain diseases to understanding of the human mind and translational research for human cognitive disorders, especially Alzheimer's disease.



### Research Institute for Natural Hazards and Disaster Recovery

The Research Institute for Natural Hazards and Disaster Recovery was established in April of 2011, succeeding the Research Institute for Hazards in Snowy Areas and the Research Center for Natural Hazards and Recovery. It was instituted to preserve the accumulated research and knowledge in natural disaster studies that the previous institutions had gathered for over 40 years. When big earthquakes occurred in Niigata Prefecture's Chuetsu region in 2004 and 2006, researchers and employees at the institution visited the affected areas immediately and helped with recovery efforts in every way they could. Specialized in the geo-scientific study of natural hazards in elevated, mountainous regions, the Institute has applied its expertise to the prevention and mitigation of natural disasters as well as to the ongoing recovery efforts. Following the Great East Japan Earthquake

on March 11, 2011, the Institute dispatched an expert team to the devastated area, and has continued to offer advice and technical support to help with the recovery efforts undertaken by severely affected municipalities in Miyagi Prefecture. Utilizing its abundance of knowledge acquired through years of study of natural disasters and its involvement in recovery efforts, the Research Institute for Natural Hazards and Disaster Recovery aims to further the scientific study of disaster mitigation in mountainous regions within and out of Japan and promote it as an established field of study by sharing its research findings with the rest of the world.





# Overseas Partner Institutions

Niigata University has concluded agreements with overseas institutions to promote academic and student exchange.

As of April 1, 2016

## Country / Region

### Australia

- University of Newcastle
- University of Sydney
- University of Technology, Sydney

### Austria

- Johannes Kepler University

### Bangladesh

- Bangabandhu Sheikh Mujib Medical University
- Bangladesh Agricultural University
- City Dental College
- Dhaka Dental College
- University Dental College

### Canada

- Concordia University
- University of Alberta
- University of British Columbia
- University of New Brunswick

### China

- Beijing Foreign Studies University
- Beijing Normal University
- Beijing Normal University Zhuhai
- Beijing Union University
- Capital Normal University
- Central China Normal University
- China Agricultural University
- China Foreign Affairs University
- China University of Geosciences (Beijing)
- China University of Geosciences (Wuhan)
- Chinese Academy of Sciences
- Dalian University of Technology
- East China Normal University
- East China University of Science and Technology
- Foreign Affairs University
- Fudan University
- Harbin Institute of Technology
- Harbin Medical University
- Harbin Normal University
- Heilongjiang University
- Huaqiao University
- Huazhong Normal University
- Huazhong University of Science and Technology
- Hubei Medical College
- Hubei University
- Hunan University

- Inner Mongolia Agricultural University
- Jilin University
- Kunming Medical College
- Minzu University of China
- Ningxia University
- Northeast Agricultural University
- Northeast Normal University
- Northeastern University
- Ocean University of China
- Peking University
- Qiqihar University
- Renmin University of China
- Shanghai Second Medical University
- South China Normal University
- The Hong Kong University of Science and Technology
- Tianjin Foreign Studies University
- Tsinghua University
- Wuhan University of Science and Technology
- Yanbian University

### Croatia

- University of Split

### Egypt

- Cairo University

### France

- Ecole Normale Supérieure de Lyon
- University of Bordeaux 3
- University of Nantes
- University of Paris 13

### Germany

- Bielefeld University
- Darmstadt University of Technology
- Dresden University of Technology
- Otto-von-Guericke University Magdeburg
- Ruhr University Bochum
- University of Munster

### Hungary

- University of Debrecen and Institute of Nuclear Research of the Hungarian Academy of Sciences

### India

- Indian Institute of Science
- Jawaharlal Nehru University

### Indonesia

- Bandung Institute of Technology
- Bogor Agricultural University
- Gadjah Mada University
- STIBA Saraswati
- University of Indonesia
- Warmadewa University

### Iran

- Islamic Azad University-North Tehran Branch

### Lithuania

- Vilnius University

### Malaysia

- Universiti Kebangsaan Malaysia
- Universiti Putra Malaysia

### Mexico

- Coahuila Autonomous University

### Mongolia

- Mongolian National University of Medical Sciences
- Mongolian National University of Education
- Mongolian University of Life Sciences
- National University of Mongolia
- Mongolian University of Science and Technology

### Morocco

- Mohammed V Soussi University

### Myanmar

- Ministry of Health, Myanmar
- University of Dental Medicine, Mandalay
- University of Dental Medicine, Yangon
- University of Medicine 2 Yangon

### Netherlands

- Wageningen University and Research Centre

### Philippines

- Manila Central University
- Mindanao State University-Iligan Institute of Technology
- University of the East
- University of the Philippines

### Poland

- University of Lodz

### Republic of Korea

- Andong Science College
- Hallym University
- Hanbat National University
- Hanyang University
- Inha University
- Kangnung National University
- Kangwon National University
- Korea Brain Research Institute
- Kyungpook National University
- Pukyong National University
- Pusan National University
- Seoul National University
- Seoul National University of Science and Technology
- Sungkyunkwan University
- Yeungnam University

### Romania

- Carol Davila University of Medicine and Pharmacy

### Russia

- Far Eastern Federal University
- Far Eastern State Agricultural University
- Far Eastern State Medical University
- Far Eastern State Transport University
- Far Eastern State University
- Far Eastern State University of Humanities
- Khabarovsk State Academy of Economics and Law

Note: Institutions with which Niigata University has Inter-University Agreements are written in green, while those with which it has Inter-Faculty/School Agreements are written in black.

- Student Exchange Agreement
- Double Degree Program

As a member of UMAP (University Mobility in Asia and the Pacific), AUN (ASEAN University Network) and other frameworks for international cooperation, Niigata University is committed to facilitating academic collaboration and global student mobility.

- Krasnoyarsk State Medical University
- North-Eastern Federal University
- Pacific State Medical University
- Primorskaya State Academy of Agriculture
- Saint-Petersburg State University

### Spain

- Complutense University of Madrid
- Public University of Navarre

### Sri Lanka

- University of Peradeniya

### Sweden

- Malmö University

### Taiwan

- Chung-Yuan Christian University
- Feng Chia University
- I-Shou University
- Kaohsiung University
- National Central University
- National Changhua University of Education
- National Cheng-Kung University
- National Chung-Hsing University
- National Sun Yat-sen University
- National Taiwan Normal University
- National Tsing Hua University
- National Yang-Ming University
- Providence University
- Soochow University
- Southern Taiwan University of Science and Technology
- Wenzao Ursuline College of Languages

### Thailand

- Chiang Mai University
- Chulalongkorn University
- Kasetsart University
- Khon Kaen University
- King Mongkut's University of Technology Thonburi
- Mahidol University
- Prince of Songkla University
- Surindra Rajabhat University
- Thammasat University

### Turkey

- Ankara University
- Ege University
- Middle East Technical University

### U.K.

- University of Bristol
- University of Glasgow
- University of Sheffield

### United States

- Kansas State University
- Louisiana State University
- Southeastern Louisiana University
- State University of New York at Fredonia
- University of California, San Francisco
- University of Illinois at Chicago Campus
- University of Minnesota
- University of Oregon
- University of Pennsylvania

### Viet Nam

- Hanoi Medical University
- Tay Nguyen University
- University of Medicine and Pharmacy at HoChiMinh City



# Campus Services

## International Student Services

Global Education Center and International Affairs Division offer various types of assistance for international students including Japanese language education, scholarships, accommodations and visas. The International Affairs Division also provides advice for student life in Japan and organizes a range of extracurricular activities to enhance communication and understanding between international students and local communities.



## Peer Tutoring

Private tutoring is provided by qualified current students of advanced standing and is available to international students to ensure their success while studying at Niigata University.



## Computing Facilities

The Center for Academic Information Service (CAIS) supports education and research activities related to information technology. The CAIS has PC terminals in various locations that are easily accessible to students. The CAIS also provides wireless LAN access points throughout each campus so that students can connect their own PCs to the Internet.



## University Library

Niigata University Library consists of the Central Library and the Medical and Dental Library, and functions as one of the academic information infrastructures supporting the University's education and research activities.

### Central Library (Ikarashi Campus)

With more than 1.3 million printed volumes and approximately 18,000 electronic resources accessible from our campuses, the library stands at the center of intellectual life on campus. Expert librarians offer students individual assistance in using all library resources to help students excel academically. The "Learning Commons" is a self-study area with computers and audio-visual equipment that supports students' collaborative and independent learning.



### Medical and Dental Library (Asahimachi Campus)

As its name suggests, this library houses a collection of books and materials (340,000 volumes) related to medicine and dentistry, and is widely used by students and faculty from the Faculty of Medicine and the Faculty of Dentistry.



## Health Services

The Health Administration Center offers health care services for students including physical examinations, health advice, first-aid and mental health counseling. Medical facilities on weekends and public holidays are also available off campus in Niigata city.



## Accommodation

The University offers international students three types of accommodation. Our reasonable rates make this an attractive option. All university-administered accommodation is self-catered and located in close proximity to supermarkets and restaurants.

### International House

A furnished residence located on Ikarashi Campus for international students and researchers.

Prices for April 2016

- Single: ¥13,800
- Double: ¥20,900
- Family: ¥27,500 for international students



### University-leased Apartments

Privately-owned furnished apartments administered by the university under the same conditions as those for International House.

Prices for April 2016

- Single: ¥13,800



### Residence Halls (Student Dormitories)

Two residence halls are open to both international and domestic students enrolled as degree-seeking students. (Non-degree-seeking students are not eligible to reside in the residences.)

Prices for April 2016

- Single: ¥13,000 (for Rikka Residence Hall)
- Single: ¥4,300 (for Ikarashi Residence Hall)



Note: All prices are subject to change without notice. ¥120=1US\$

In addition to the facilities mentioned above, there is a variety of other housing options in close proximity to Ikarashi and Asahimachi Campus.

### Price Ranges for Apartments in Niigata

- Room with private bathroom: ¥25,000 to ¥55,000
- Room with shared bathroom: ¥15,000 to ¥20,000
- Apartments with meals (boarding house): ¥40,000 to ¥65,000

Note: Rates will vary depending on multiple factors such as location and room type.

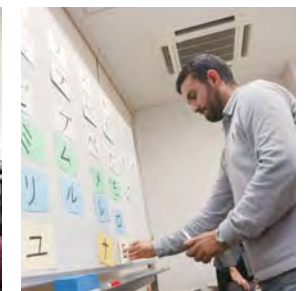
### Living Expenses in Niigata

Living costs will vary depending on your circumstances. The average is ¥98,100 monthly according to a number of student surveys. This includes room rents, essential expenses such as food and utilities, and other costs related to study excluding tuition.

## Language Studies

### Study Japanese at Niigata University

The Japanese Language Program offers students an interactive way to learn and practice Japanese. Our teachers are experienced instructors in teaching Japanese as a foreign language. Students from a variety of linguistic backgrounds come together to acquire the language skills necessary for academic success in Japan.



The Japanese Language Program is divided into two courses: Intensive Course and Non-Intensive Course.

### Intensive Course

The Intensive Course is available for beginners through upper intermediate students.

\*JLPT stands for the Japanese-Language Proficiency Test that certifies Japanese language proficiency.

Note:

- Upon arrival, students will be given a placement test and placed into the appropriate level based on the results.
- The advanced level class is provided for those who have attained level N1 of the JLPT.
- Eligibility for the course depends on student status.

Levels	4 Levels Students are allowed to take this course 1 term only. -Intensive 0: Beginner (little or no knowledge of Japanese) -Intensive 1: Elementary (JLPT N4/N5 level) -Intensive 2: Intermediate (JLPT N3/N4 level) -Intensive 3: Upper intermediate (JLPT N2/N3 level)
Hours/Week	-Int.0: 10 lessons/week -Int.1,Int.2: 7 lessons/week, -Int.3: 6 lessons /week
Class Size	0:10(max.) 1,2,3.:20(max.)
Length	15 weeks (April - July / October - February)
Eligibility	Exchange students

### Non-Intensive Course

This course is basically for those who do not have enough time for Japanese language learning.

Note:

- Eligibility for the course depends on student status.
- The advanced level classes are provided for those who have attained level N2 of the JLPT.

Levels	-Regular 0: Beginners -Regular 1: Elementary (for students aiming for level N4 or N5 of the JLPT) -Regular 2: Intermediate (for students aiming for level N4 or N3 of the JLPT) -Kanji/Vocab. (any student) -Composition (any student) -Study for N1 (any student)
Hours/Week	Reg.0: 5 lessons/week, Reg.1:2 lesson/week, Reg.2:2lessons/week Kanji/Vocab. :2 lessons/week N1:1 lesson/week Composition:1 lesson/week Asahimachi Japanese Classes:2 levels(2 lessons/week at each level)
Class Size	20
Length	15weeks (April - July/ October - February)
Eligibility	Exchange students



# Application Information

Enrollment at Niigata University can be split into two main types: **Matriculated Admission** and **Non-Matriculated Admission**.

Note: The application information in this prospectus is a brief overview of the application process for international applicants. More information is available in the Handbook of Admissions for International Students, which can be downloaded at [http://www.niigata-u.ac.jp/e/about/30\\_publication\\_010.html](http://www.niigata-u.ac.jp/e/about/30_publication_010.html)

## Matriculated Admission

Matriculated admission is for degree-seeking students who intend to obtain an undergraduate or a graduate degree at Niigata University.

### Key dates for admission

Program	Semester	Classes Start	Application Available	Application Deadlines	Examination Period	Admission Notification	Registration Periods
Undergraduate Programs	Spring	April	November	February	February	Early March	Late March
Graduate Programs	Spring Fall	April October	Key dates for admission to graduate and professional programs vary. Please contact the school you are interested in for details.				

### Entry requirements

#### Undergraduate programs

International applicants must meet the following minimum requirements before submitting an application.

1 Applicants must have taken the Examination for Japanese University Admission for International Students (EJU) provided by the Japan Student Services Organization (JASSO) prior to application.

\* For more details, please visit the JASSO website at [http://www.jasso.go.jp/index\\_e.html](http://www.jasso.go.jp/index_e.html)

2 - Applicants must have graduated or plan to graduate from an accredited secondary or high school overseas and have completed a minimum of 12 years of formal education or an equivalent program accredited by the Japanese Ministry of Education, Culture, Sports, Science, and Technology (MEXT) prior to enrollment, or

- Applicants must have obtained or plan to obtain an internationally recognized certificate/diploma (i.e., International Baccalaureate, Abitur, or Baccalauréat) and be at least 18 years of age prior to enrollment.

#### Graduate programs

##### Master's programs

International applicants must meet all the following minimum requirements before submitting an application.

1 Applicants must have received or plan to receive a bachelor degree from a Japanese or approved overseas university and have completed a minimum of 16 years of formal education prior to enrollment, or

2 Applicants must be at least 22 years of age and possess an academic background equivalent or superior to that described in Clause 1 prior to enrollment.

##### Doctoral programs

###### - Programs other than Medical and Dental Sciences

International applicants must meet all the following minimum requirements before submitting an application.

1 Applicants must have received or plan to receive a master's degree or equivalent from a Japanese or approved overseas university and have completed a minimum of 18 years of formal education prior to enrollment, or

2 Applicants must be at least 24 years of age and possess an academic background equivalent or superior to that described in Clause 1 prior to enrollment.

###### - Medical and Dental Sciences

International applicants for the Graduate School of Medical and Dental Sciences must meet all the following minimum requirements before submitting an application.

1 Applicants must have received or plan to receive a bachelor or master's degree in medical, dental, or veterinary science or equivalent from a Japanese or approved overseas university and have completed a minimum of 18 years of formal education prior to enrollment, or

2 Applicants must be at least 24 years of age and possess an academic background equivalent or superior to that described in Clause 1 prior to enrollment.

#### Important Notices:

- Entry requirements may differ depending on the program and the course you choose.
- Additional documentation may be required by the faculty or school to which you are applying.

### Steps to Apply

<b>Step 1.</b> <b>Preliminary screening</b>	The first step of the application process is to document your eligibility for the courses and programs you apply for. International applicants should submit the pre-qualification documents by the appropriate deadline.
<b>Step 2.</b> <b>Submit your application</b>	When the preliminary review is complete, we will notify you of your eligibility for admission. Once your eligibility is confirmed, you must complete and submit the paper application.
<b>Step 3.</b> <b>Pay the examination fee</b>	A fee is required to take the entrance examination administered by Niigata University.
<b>Step 4.</b> <b>Take the entrance examination</b>	You must take the entrance examination test as part of our application requirements. We use the test results to make admission decisions. The content and subjects required differ from those for Japanese students.
<b>Step 5.</b> <b>Results / Notification</b>	You will be able to view the results of the entrance examination on the university website. An official notification of our admission decision will be sent with other necessary documents to successful applicants by mail.

## Non-Matriculated Admission

Non-matriculated admission is for students who attend classes or receive research supervision but who elect not to seek a degree at Niigata University. The new semester usually begins in April or October.

\* For details about application procedures, please send mail to [kokusai@adm.niigata-u.ac.jp](mailto:kokusai@adm.niigata-u.ac.jp)

### Types of non-matriculated students

#### Fee-paying students

**Auditing students** — students taking undergraduate or graduate classes without pursuing a degree

**Research students** — students conducting undergraduate or graduate research  
\* Many international applicants use this option during the preparatory phase for graduate school entrance examinations.

#### Students with tuition waivers

**Exchange students** \*1 — exchange students from our partner universities

- Special auditing students — students from our partner universities (other than Special Research Students)

- Special research students — students from our partner universities, conducting postgraduate research in a special field

**Japanese government** (Ministry of Education, Culture, Sports, Science and Technology “MEXT”) **scholarship students** \*2

- Research students — students conducting undergraduate or graduate research

- Japanese studies students — visiting undergraduate students majoring in Japanese language or Japanese culture at a university overseas. The term of the program is one year and students are required to receive training offered by Niigata university.

- Teacher training students — visiting teachers who have worked at a primary or secondary school overseas. Trainees study Japanese language on a 6-month preparatory course before starting a one-year training program.

\*1: Students interested in these application options should contact the international exchange department at the university in their home country.

\*2: Students interested in these application options should contact MEXT directly for more details.

## Tuition and fees

### Degree seeking students

Tuition category	Examination fee	Matriculation fee	Tuition (per year)
Undergraduate students	¥17,000	¥282,000	¥535,800
Graduate students	¥30,000	¥282,000	¥535,800

### Non-degree seeking students (fee-paying students)

Tuition category	Examination fee	Admission fee	Tuition
Auditing students	¥9,800	¥28,200	¥14,800 (per credit)
Research students	¥9,800	¥84,600	¥29,700 (per month)
Special auditing students	waived	waived	waived *
Special research students	waived	waived	waived *

\* Please note that, on occasion, exchange students may be required to pay tuition fees due to the agreement between Niigata University and their home institution.

Note:

- Tuition and fees are based upon the costs for academic year 2016 and are subject to change without notice.
- Students meeting certain academic standards who are facing financial difficulties may apply for an exemption of all or half of the tuition and admission fees.
- Various scholarships are available for international students in need of financial support.







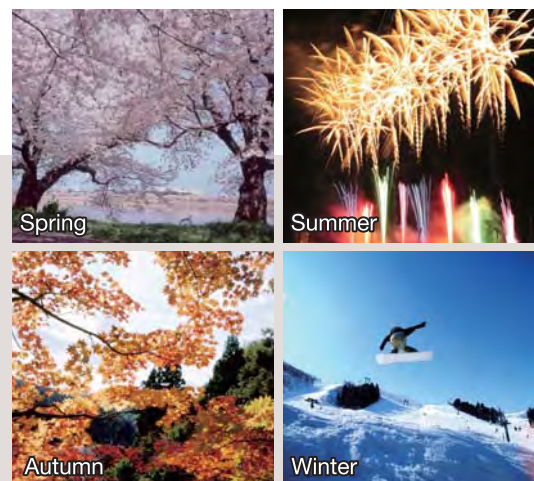
# About Niigata City



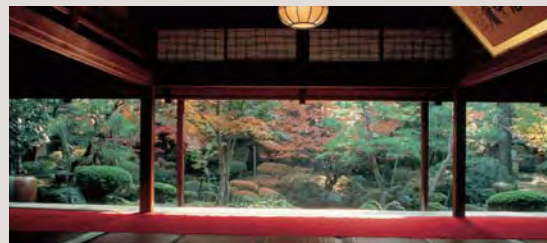
Niigata City has a population of more than 800,000 and is the only government-ordinance-designated city on the Japan Sea Coast of Japan's main island Honshu. As the largest city on the Japan Sea Coast, Niigata City functions as a strategic hub for domestic and international land, sea and air transport.

## Rich in exquisite nature

Although downtown Niigata City has all the conveniences of a major city, it also has superb access to places abounding in nature. The city and its surrounding areas are home to numerous historic hot spring towns and ski resorts which are popular destinations for Japanese and foreigners alike. People enjoy hiking and birdwatching in Niigata City's beautiful mountains and wetlands registered under the Ramsar Convention, and watching the sun set over the sea near Niigata University is nothing less than stunning.



## Old Historical Houses



Niigata city has flourished as a port town for the past 1,000 years, and the homes of wealthy landowners and merchants, shrines and other old historic buildings can be found spotted around the city. Of these Hakusan Shrine and the Northern Culture Museum, which is also known as a grand landowner's mansion, are particularly famous.

## Rich Food Culture

Niigata is well-known as one of Japan's leading grain-producing regions and it produces more rice than any other prefecture. Koshihikari, a variety of rice created in Niigata, is widely regarded as the most delicious type of rice and is popular within Japan as a brand-name rice. Sake is made from rice, and given that Niigata is blessed with both superb rice and water, the region is also famous for its delicious sake. Moreover, with fresh seafood available year round from the Japan Sea, a culture of seafood cuisine has developed and an array of sushi, sashimi and other fish dishes is available for your enjoyment.



## Climate in Niigata City

The Japanese archipelago stretches from north to south. Hokkaido in the north has a subarctic climate whilst Okinawa in the south is subtropical. In Niigata, which is located midway between the two, one can experience four distinct seasons. Although Niigata Prefecture is known for its heavy snowfalls, snow cover in Niigata City where the university campuses are located is minimal, and most of Niigata City's year-round precipitation is in the form of rainfall.

