



2020-2021
NIIGATA UNIVERSITY

QUICK GUIDE



新潟大学
NIIGATA UNIVERSITY

ABOUT US

OVERVIEW

Niigata University has a long history and a rich tradition, with its predecessor organizations dating back about 150 years. Since its official inauguration, the university has played a key role as a center of higher education and research in Japan. Today, the university has developed into a large-scale, comprehensive university covering a varied range of academic fields, including humanities and social sciences, natural sciences, medical and dental sciences with 10 faculties, 5 graduate schools, two specialized research institutes and a university hospital.

The university actively promotes independent



Camellia rusticana: Prefectural tree

and creative studies for our students while also striving to be an international base for higher education and advanced research by promoting collaborative research and education with overseas universities and institutions. In particular, taking advantage of the geographical features of the university which is located in Niigata City facing the Sea of Japan, the university has been working on building and strengthening international networks in Asia while looking out towards the world.



The main gate of Ikarashi campus



The front gate of Faculty of Medicine on Asahimachi campus

QUICK FACT

FOUNDED

May 1949



LOCATION

Niigata, Japan



ANNUAL BUDGET

JPY 68 billion (US\$ 636 million)



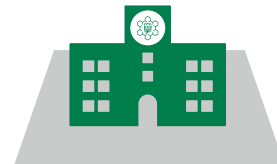
LAND

6 million m²



BUILDING

0.48 million m²



ENROLLMENT

(As of May 1st, 2020)

Total: 12,247

Undergraduate: 10,172

Graduate: 2,027



EMPLOYEES

(As of May 1st, 2020)

Total: 3,281

Board Member: 10

Faculty: 1,564

Staff: 1,707



RANKINGS

QS World University Rankings 2021

#541 – 550

THE Clinical, Pre-clinical and Health Ranking 2020

#401 – 500

ARWU Dentistry & Oral Sciences 2020

#39



INTERNATIONAL AFFAIRS

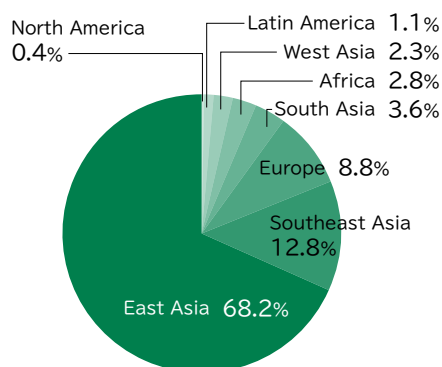
We have gained momentum as one of the Japan's most ambitious, research-led universities building networks with partner institutions overseas.

OVERSEAS PARTNER INSTITUTIONS (As of May 1st, 2020)
: 357 cases with 41 countries/regions



INTERNATIONAL STUDENTS

There are 468 students from 39 countries or regions studying at Niigata University as of May 1st, 2020.



OVERSEAS OFFICES

- Beijing Liaison Office
- Sri Lanka Liaison Office
- Moscow Liaison Office
- Infectious Diseases Research Center of Niigata University in Myanmar (Established by Graduate School of Medical and Dental Sciences)
- Office of the International Education Program G-MedEx in Russia (Established by Faculty of Medicine)

LIAISON PROFESSOR OF NIIGATA UNIVERSITY

The "Liaison Professor of Niigata University" is selected by the President of Niigata University in order to express appreciation for a contribution to the academic globalization of Niigata University by coordinating with their university and Niigata University in terms of education, research and student exchange activities. We expect that Liaison Professors will kindly continue to help us attain our goals: to internationally activate our education and research and to contribute more to international societies. As of May, 2020, there are 22 Liaison Professors from 13 countries.



ACADEMICS

PROGRAMS AT A GLANCE

Under 10 Faculties, we offer 37 degree-granting programs.

FACULTY OF HUMANITIES



Degrees offered: Bachelor of Arts

Number of students: 978

Programs:

- Psychology and Human Studies
- Society and Culture
- Languages and Cultures



FACULTY OF LAW



Degrees offered: Bachelor of Laws

Number of students: 794

Programs:

- Legal Education
- Legal Profession



FACULTY OF SCIENCE



Degrees offered: Bachelor of Science

Number of students: 906

Programs:

- Mathematics
- Physics
- Chemistry
- Biology
- Geology
- Environmental Science
- Field Research in the Environmental Sciences



FACULTY OF EDUCATION



Degrees offered: Bachelor of Education

Number of students: 911

Programs:

- Teacher Training



FACULTY OF ECONOMIC SCIENCES



Degrees offered: Bachelor of Economics

Bachelor of Management

Bachelor of Arts

Number of students: 1,395

(Faculty of Economic Sciences; 352,
Faculty of Economics; 1,043)

Programs:

- Economic Studies
- Management Studies
- Interdisciplinary Japanese Studies
- Regional Leadership



FACULTY OF ENGINEERING



Degrees offered: Bachelor of Engineering

Number of students: 2,337

Programs:

- Mechanical Engineering
- Civil and Environmental Engineering
- Electronics, Information and Communication Engineering
- Smart Information Systems
- Chemistry and Chemical Engineering
- Materials Science
- Architecture
- Interdisciplinary Program of Biomedical Engineering, Assistive Technology and Art and Sports Sciences
- Engineering Management





FACULTY OF AGRICULTURE

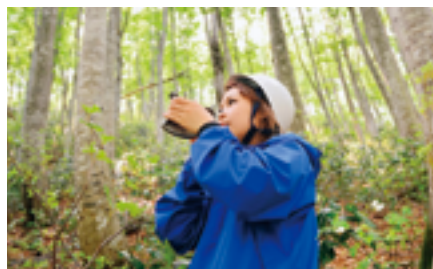


Degrees offered: Bachelor of Agriculture

Number of students: 761

Programs:

- Applied Life Science
- Food Science
- Agriculture and Bioresources
- Environmental Science for Agriculture and Forestry
- Field Research in the Environmental Sciences



FACULTY OF MEDICINE SCHOOL OF MEDICINE



Degrees offered: Doctor of Medicine

Number of students: 785

Programs:

- Medicine



FACULTY OF MEDICINE SCHOOL OF HEALTH SCIENCES



Degrees offered: Bachelor of Science in Nursing
Bachelor of Health Sciences

Number of students: 681

Programs:

- Nursing
- Radiological Technology
- Medical Technology



FACULTY OF DENTISTRY



Degrees offered: Doctor of Dental Surgery
Bachelor of Oral Health and Welfare

Number of students: 349

Programs:

- Dentistry
- Oral Health and Welfare



COLLEGE OF CREATIVE STUDIES



Degrees offered: Bachelor of Philosophy

Number of students: 275

Programs:

- Creative Studies



DISCOVER GRADUATE STUDIES

We offer a variety of graduate programs under 5 Graduate Schools.

Programs include Master's and Doctoral programs.

TEACHER EDUCATION



Degrees offered:

Master of Education

MODERN SOCIETY AND CULTURE



Degrees offered:

- Master of Arts
- Master of Law
- Master of Public Administration
- Master of Economics
- Master of Public Management
- Master of Business Administration
- Master of Philosophy
- Doctor of Philosophy
- Doctor of Philosophy in Literature
- Doctor of Laws
- Doctor of Philosophy in Economics
- Doctor of Philosophy in Education

SCIENCE AND TECHNOLOGY



Degrees offered:

- Master of Philosophy
- Master of Science
- Master of Engineering
- Master of Agriculture
- Doctor of Philosophy
- Doctor of Philosophy in Science
- Doctor of Philosophy in Engineering
- Doctor of Philosophy in Agriculture

HEALTH SCIENCES



Degrees offered:

- Master of Health Sciences
- Doctor of Philosophy (Health Sciences)

MEDICAL AND DENTAL SCIENCES



Degrees offered:

- Master of Biomedical Science
- Master of Oral Health and Welfare Science
- Doctor of Philosophy (Oral Health and Welfare Science)
- Doctor of Philosophy (Medical Science)
- Doctor of Philosophy (Dental Science)
- Doctor of Philosophy

AFFILIATED FACILITIES

Niigata University is home to a university hospital providing high-quality, patient-centered medical care and two research institutes, both of which are one of the world's leading research institutes.

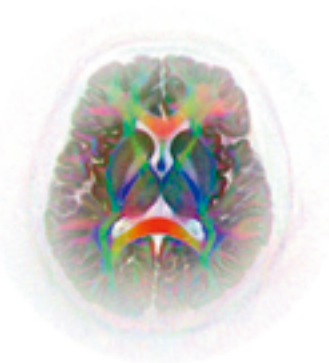
NIIGATA UNIVERSITY MEDICAL & DENTAL HOSPITAL

A regional, function-specific hospital with a total of 35 departments (31 medical and 4 dental) and 827 beds, providing high-level and advanced medical treatment.



BRAIN RESEARCH INSTITUTE

Established in 1967 as the first affiliated research institute of the national universities in Japan on brain in order to elucidate scientific principles relevant to the brain function and mechanisms of brain diseases.



RESEARCH INSTITUTE FOR NATURAL HAZARDS AND DISASTER RECOVERY

Established in April of 2011, aiming to further the scientific study of disaster mitigation by sharing its research findings with the rest of the world.



University-wide Organization for Research and Education

SAKEOLOGY CENTER

As the world's first base, in collaboration with Niigata prefecture and the Niigata Sake Brewers Association, the center aims to develop "Sakeology", which is an academic discipline covering a broad variety of cultural and scientific fields concerning sake through education, research, international exchange and providing information.



ASIAN LINK RESEARCH CENTER

Aiming at conducting interdisciplinary research for building society in near future by addressing the social needs of East Asia. A further objective is to support development of leaders closely related to such research.



SADO ISLAND CENTER FOR ECOLOGICAL SUSTAINABILITY

Established in April, 2019, by integrating three existing institutions of Niigata University to be a research and education base for field science related to nature on Sado Island.



ABOUT NIIGATA CITY

Niigata City is a beautiful port city with a population of about 800,000. Although the city allows people to lead their lives with comfort and convenience being a great domestic and international transportation hub, Japan's pristine landscapes can still be found and traditional culture remains untouched.



ATTRACTIONS

Each of Niigata's four seasons has its own distinctive attractiveness. In the spring, graceful cherry blossoms and colorful tulips can be seen all over the city. People enjoy marine sports in the summer, appreciate the changing colors of leaves in the autumn and the winter blesses the city with a beautiful snow cover. Whenever you choose to come, Niigata will offer you an unforgettable scenic experience.



RICH FOOD CULTURE

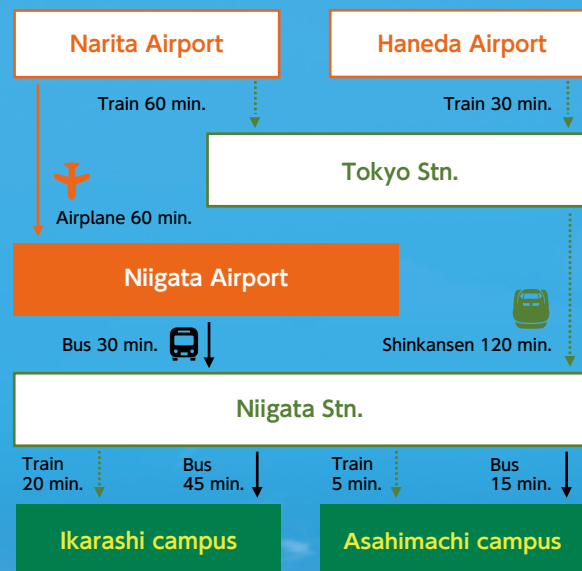
Niigata is well-known as one of the country's best culinary destinations given its bountiful grains and fresh seafood. Niigata Sake is considered one of the best sake in Japan thanks to the high quality rice, the smooth water from the mountains, and the technique of the craftsmen. Try and enjoy the best quality Japanese cuisine.



LOCATIONS



ACCESS FROM TOKYO



SCAN THE QR-CODE BELOW TO DOWNLOAD:



About NU

- President's Message
- University Profile
- Living in Niigata
- Brochures / Videos etc.



Study at NU

- Admission Flow Chart
- Degree Programs (Undergraduate/Graduate)
- Non-Degree Programs (Research Student/Exchange Student Program)
- NU Short-term Program
- Japanese Language Programs
- Fees & Scholarships
- Accommodations etc.



Research

- Feature
- Find Researchers etc.



Global Engagement

- Overseas Partner Institutions
- Liaison Professor of Niigata University
- Database for NU International Collaborative Activity etc.



Asian Network

- Network for Education and Research on East Asian Rim

International Office, Niigata University
 8050 Ikarashi 2-no-cho, Nishi-ku, Niigata, 950-2181, JAPAN
 TEL +81-25-262-6935
 FAX +81-25-262-7519
 E-mail kokusai@adm.niigata-u.ac.jp
<https://www.niigata-u.ac.jp/en/>



**NIIGATA
UNIVERSITY**