

NIIGATA UNIVERSITY

General Information



International Office, Niigata University
8050 Ikarashi 2-no-cho Nishi-ku
Niigata 950-2181, JAPAN

TEL: +81-25-262-6935

FAX: +81-25-262-7519

E-mail: kokusai@adm.niigata-u.ac.jp

<https://www.niigata-u.ac.jp/en/>



Visit Niigata University



Profile

SOMEYA Toshiyuki, M.D., Ph.D.
Professor SOMEYA Toshiyuki is the 17th president of Niigata University. Born in Oita Prefecture in 1958, he earned his M.D. from the University of Tokyo in 1983 and completed his Ph.D. at Shiga University of Medical Science in 1990. He worked at the University of Tokyo and Shiga University of Medical Science before joining Niigata University in 1998. Since then, he has worked extensively in medical education, research, and university administration. His academic field is psychiatry.

Career History

- July 1986: Assistant Professor, Shiga University of Medical Science
- April 1993: Lecturer, Health Administration Center, Shiga University of Medical Science
- January 1998: Professor, Faculty of Medicine, Niigata University
- February 2018: Head of the Institute of Medicine and Dentistry and Dean of the Faculty of Medicine, Niigata University
- February 2024: Executive Vice President for Global Affairs, Niigata University
- February 2026: President, Niigata University



President's Message

Opening New Frontiers for People and Society through Life Innovation

— From Vision to Implementation —

Our world faces interconnected and increasingly complex challenges: declining birthrates, aging populations, environmental degradation, natural disasters, and global uncertainty. To live is not merely to possess life itself. It is to sustain our daily living, to walk our individual life journeys, and to choose the future within the society and the planet that sustain us. Universities must therefore address the full dimensions of human life and apply knowledge, both academically and practically, to help build a sustainable and resilient future.

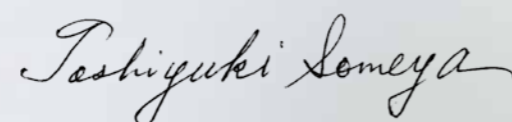
In 2021, Niigata University introduced Vision 2030, committing to become a front-runner in future life innovation. Since then, we have reassessed research, education, and societal engagement, advancing integrated knowledge that connects life, daily living, individual trajectories, and the environments that sustain them. Guided by this vision, we aim to transform ideas into action and ensure their lasting impact across communities and society.

Located in Niigata City—the only ordinance-designated city on the Sea of Japan coast—the University has developed within a rich natural setting and a longstanding culture of openness. The Echigo Plain and Niigata's heritage in maritime trade and international exchange have shaped the University as a regional and global knowledge hub, closely linked to both local society and the wider world.

Tracing its origins back 150 years, Niigata University was reorganized in 1949 as a national university. Today, with 13,000 students and 3,000 faculty and staff across diverse faculties, graduate schools, research institutes, and a university hospital, we contribute broadly to education, research, and medical care.

Our principle of Autonomy and Creativity drives reforms and fosters independent, cross-disciplinary value creation. We are reorganizing graduate programs for flexibility and interdisciplinarity, strengthened by the FLAGS initiative, which positions doctoral education at the core of institutional transformation. Research capability is advancing through J-PEAKS, a national initiative supporting universities with distinctive regional and research strengths.

Rooted in a region rich in resources yet confronting real challenges, Niigata University seeks to address global issues beginning here. Through life innovation, we will help shape the future of people and society.



SOMEYA Toshiyuki, M.D., Ph.D.
President

Contents

Message from the President	2
Overview	
History	6
Organization	7
Academics: Undergraduate Faculties	
Faculty of Humanities	8
Faculty of Education	9
Faculty of Law	9
Faculty of Economic Sciences	10
Faculty of Science	10
Faculty of Engineering	11
Faculty of Agriculture	11
Faculty of Medicine School of Medicine	12
Faculty of Medicine School of Health Sciences	12
Faculty of Dentistry	13
College of Creative Studies	13
Academics: Graduate Schools	
Professional School of Teacher Education	15
Graduate School of Modern Society and Culture	16
Graduate School of Science and Technology	17
Graduate School of Health Sciences	18
Graduate School of Medical and Dental Sciences	19
Facilities	
University Hospital	20
Affiliated Research Institutes	21
University-wide Organization for Research and Education	22
Attached Schools	23
Global Engagement	
Database for NU International Collaborative Activity	24
Overseas Offices	25
Liaison Professors	25
Overseas Partner Institutions	26
Study at Niigata University	28
Campuses	
Ikarashi Campus	30
Asahimachi Campus	31
Campus Location & Access	32
About Niigata City	33

*Unless otherwise noted, the figures are as of May 1, 2020.

Discover the Attractions of Niigata

Bandai Bridge in the spring,
a symbol for Niigata city



Niigata city surrounded by paddy rice fields



Niigata festival folk dancing parade



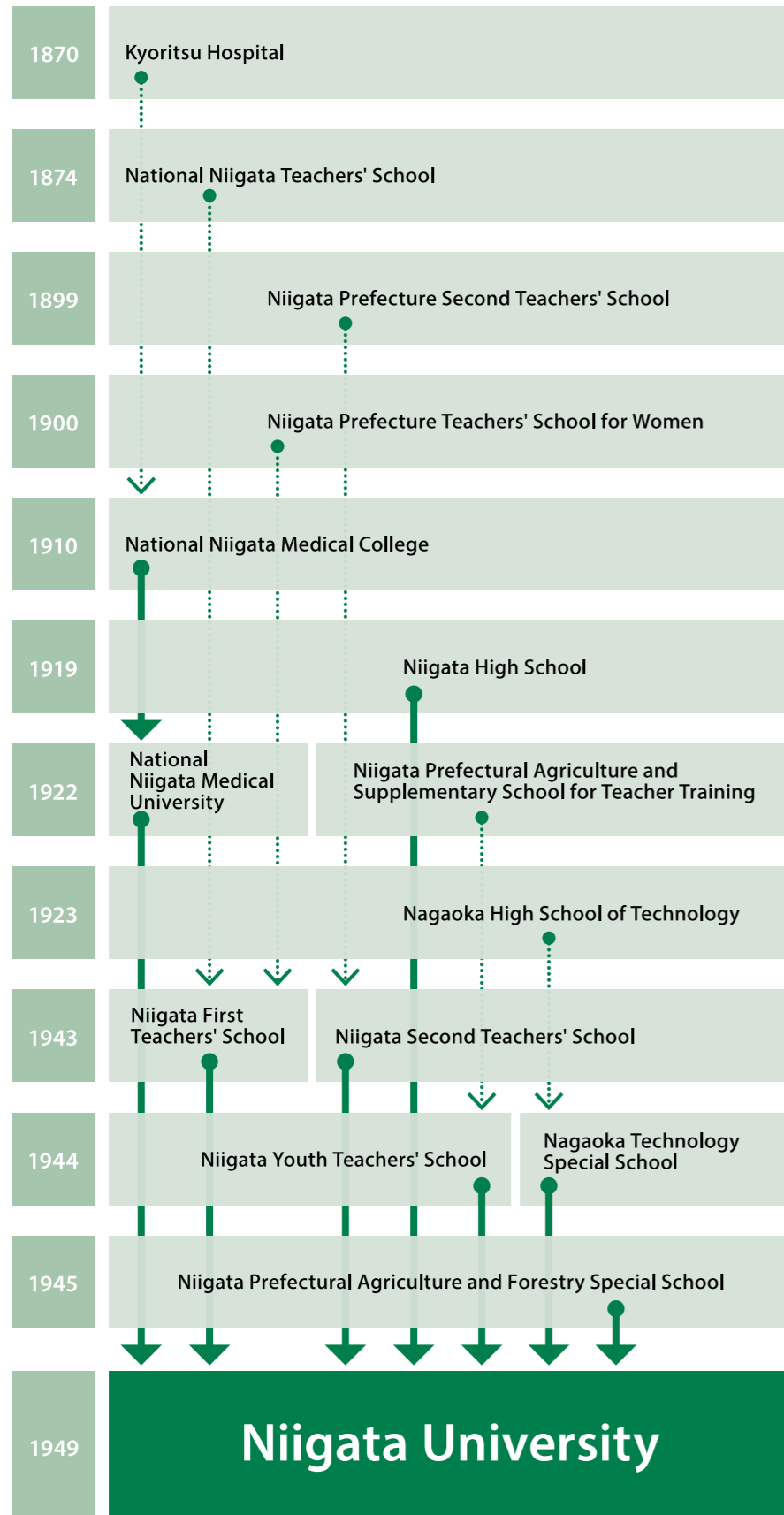
Wealthy farmer's house where you can feel the history



Snowfall in the city



History



National Niigata Medical College



Niigata High School

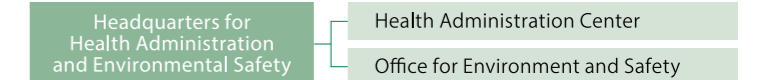
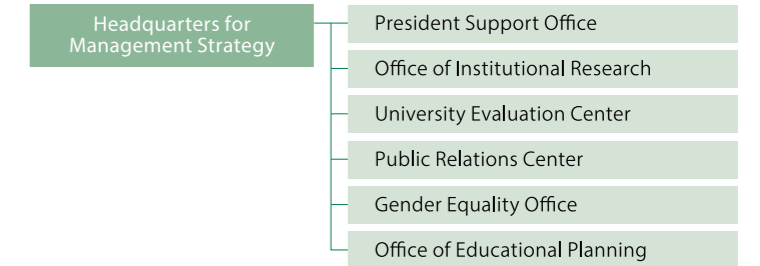
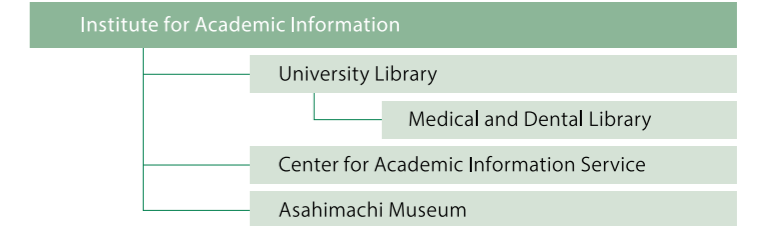
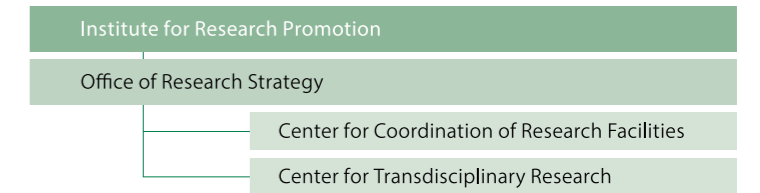
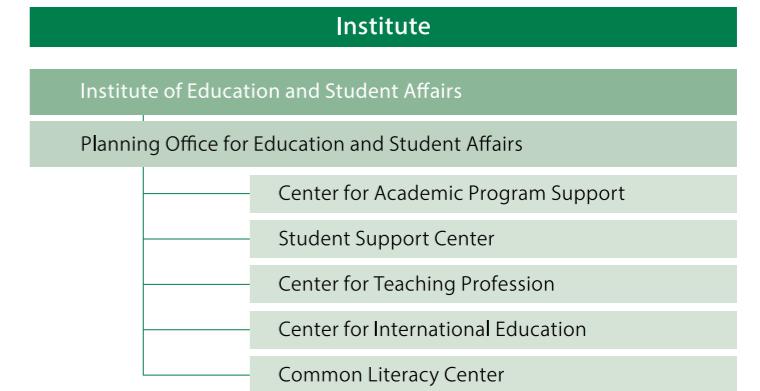
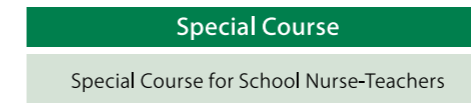
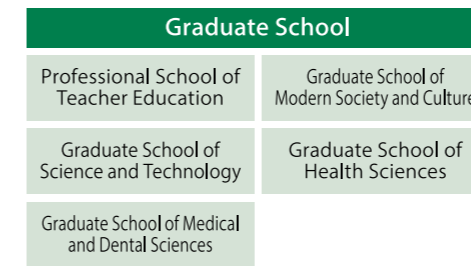
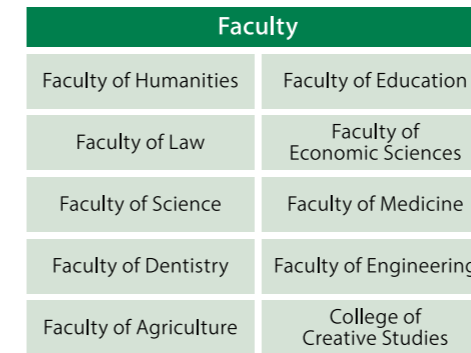
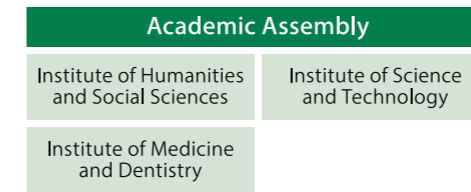


Niigata University Head Office



1st Niigata University Graduation Ceremony

Organization



Undergraduate Faculties



Faculty of Education



The Faculty of Education, which began as the Niigata Teachers' School, is a specialized educational department with over 140 years of tradition. With an ample selection of subjects established on a foundation of thirteen courses and a curriculum for step-by-step practical training, the faculty possesses a broad perspective that conceives of the entirety of school-based education comprehensively. We aim to train schoolteachers able to form necessary interpersonal relationships as instructors, and who have mastered both professional and practical competencies.

- Degrees Offered** Bachelor of Education
- Number of Students** 911
- Programs** Teacher Training



Faculty of Humanities



The Faculty of Humanities covers a wide range of fields, from the close reading of various foreign texts and pre-modern documents, to fieldwork that broadens the arena of learning to society in general, as well as to contemporary cutting-edge information and media studies. We aim to train future professionals who will be equipped with a wealth of specialized knowledge and a broad perspective able to meet the challenges and demands of contemporary society.

- Degrees Offered** Bachelor of Arts
- Number of Students** 973
- Programs**
 - Psychology and Human Studies
 - Society and Culture
 - Languages and Cultures



Faculty of Law



With the educational goal of training professionals who will be able to play an active role in contemporary society, the Faculty of Law has developed unique classes that include polished interactive lessons in an exercise format and our "Omnibus Lecture by Guest Speakers" inviting visiting lecturers from various fields. It focuses on education keyed to globalization as well as education to provide training for the workforce that society needs. In addition, in April 2019, we began offering a "Course for Legal Profession" aimed at training legal professionals.

- Degrees Offered** Bachelor of Laws
- Number of Students** 794
- Programs**
 - Legal Education
 - Legal Profession



Faculty of Economic Sciences



*Faculty of Economics was reorganized into Faculty of Economic Sciences in April, 2020.

The Faculty of Economic Sciences trains professionals who will master specialized knowledge in the humanities and social sciences with a focus on economics and business administration, so that they will be able to bring an international perspective to finding solutions to social challenges like regional revitalization. To acquire a comprehensive sense of discernment and sociability, students will have ample opportunity to learn together with working professionals and students from other cultures. We will contribute to society at the local and international level by training leaders able to play an active role across a wide range of fields and key personnel who will support local communities.

- Degrees Offered**
- Bachelor of Economics
 - Bachelor of Management
 - Bachelor of Arts

Number of Students 1,395 (Faculty of Economic Sciences; 352, Faculty of Economics; 1,043)

- Programs**
- Economic Studies
 - Management Studies
 - Interdisciplinary Japanese Studies
 - Regional Leadership



Faculty of Engineering



In the Faculty of Engineering, we provide a distinctive education designed to cultivate “Kougakuryoku” that focuses on equipping students with fundamental academic skills in the engineering fields and developing their ability to apply the knowledge and skills acquired. Learning ability itself cannot deal with complicated situations in the real world, as engineering involving science and technology aims to find applications in society and industry. Practical and comprehensive ability is required besides. The term “Kougakuryoku” developed by the Faculty of Engineering represents a concept that combines these two abilities.

Also, we continue to make progress on internationally highly-rated researches in the field of composite materials, alternative energy, information technology, and sensing technology.

Degrees Offered Bachelor of Engineering

Number of Students 2,337

- Programs**
- Mechanical Engineering
 - Civil and Environmental Engineering
 - Electronics, Information and Communication Engineering
 - Smart Information Systems
 - Chemistry and Chemical Engineering
 - Materials Science
 - Architecture
 - Interdisciplinary Program of Biomedical Engineering, Assistive Technology and Art and Sports Sciences
 - Engineering Management



Faculty of Science



Science elucidates natural mechanisms that extend from the infinitesimal world of elementary particles to various substances and life forms, as well as the planet and even the universe. The Faculty of Science aims to provide a foundation for the natural sciences required by society, such as the development of medical and industrial technologies and the resolution of energy issues and environmental problems. We train personnel who will acquire a profound education and high-level expertise and be equipped with the problem-solving skills to be able to contribute to society through science.

Degrees Offered Bachelor of Science

Number of Students 906

- Programs**
- Mathematics
 - Physics
 - Chemistry
 - Biology
 - Geology
 - Environmental Science
 - Field Research in the Environmental Sciences



Faculty of Agriculture



Agriculture is a field of study that supports food, life, and the environment. Aiming for sustainable agricultural development and environmental conservation in the twenty-first century, we are training personnel with an international perspective who will be able to make use of basic science and applied technologies. By utilizing the latest bioscience and information technologies, we are also focusing on projects that will contribute to communities at the local level.

Degrees Offered Bachelor of Agriculture

Number of Students 761

- Programs**
- Applied Life Science
 - Food Science
 - Agriculture and Bioresources
 - Environmental Science for Agriculture and Forestry
 - Field Research in the Environmental Sciences



School of Medicine, Faculty of Medicine



With our educational philosophy of “contributing to human well-being through medical science,” while emphasizing a practical education, we aim to train medical professionals and medical researchers who, beyond simply qualifying for their licenses as physicians, will be able to also play an active role in a variety of other medicine-related fields. In addition, we are actively engaged in medical and health care exchanges not only with Western countries but with countries on the Sea of Japan such as Russia and China, countries in Asia such as Myanmar, Malaysia and Mongolia as well.

Degrees Offered Doctor of Medicine

Number of Students 785

Programs Medicine



Faculty of Dentistry



The Faculty of Dentistry consists of two departments, the Department of Dentistry, which offers a six-year program for training dentists, and the Department of Oral Health and Welfare, which offers a four-year program for training dental hygienists and certified social workers. The education and research we provide in the field of oral life sciences have been met with high acclaim in both Japan and overseas. We continue to train professionals capable of providing a comprehensive medical care from a perspective oriented to oral health and “eating” and contribute to the society.

Degrees Offered ■ Doctor of Dental Surgery
■ Bachelor of Oral Health and Welfare

Number of Students 349

Programs ■ Dentistry
■ Oral Health and Welfare



School of Health Sciences, Faculty of Medicine



Through education that cultivates the ability to conduct highly distinctive research and development that will contribute to health and medical care in Japan and overseas, the School of Health Sciences trains nurses, radiological technologists, and clinical technologists with an abundant degree of humanistic empathy able to contribute to holistic medicine and team-based healthcare, while also training personnel who will be able to contribute to the local community.

Degrees Offered ■ Bachelor of Science in Nursing
■ Bachelor of Health Sciences

Number of Students 681

Programs ■ Nursing
■ Radiological Technology
■ Medical Technology



College of Creative Studies



Unlike conventional Faculties that focus on individual academic fields, the College of Creative Studies is home to a completely new educational program in which each student sets their own goals and creates a learning program by selecting issues and fields of specialty. We are training personnel who will be able to drive social change and innovation in science and technology by mastering the ability to analyze issues from multiple angles and to collaborate with others across different specialist fields.

Degrees Offered Bachelor of Arts

Number of Students 275

Programs Creative Studies



Graduate Schools



Professional School of Teacher Education



The Professional School of Teacher Education is a professional graduate school specializing in teachers' practical training as a highly specialized field of professional development. With the objective of playing a leading role in teacher education, we will train school leaders with a solid theory and excellent practical skills and competent novice teachers with the practical teaching skills and methods contributing to school development. Then, we will support the development of educational capacity of local communities and schools.



Degrees Offered Master of Education

Number of Students 43

Professional Degree Programs Development of Educational Practice

- Course of Educational Practice
- Course of School Management

Graduate School of Modern Society and Culture



The Graduate School of Modern Society and Culture is a comprehensive graduate school based on the basic principles of "modernity" and "symbiosis." We train highly specialized professionals who will be able to explore various issues in Japan and the world academically from a broad-based perspective. With many mature and overseas students, many of our alumni are active in society.



Degrees Offered

- Master of Arts
- Master of Law
- Master of Public Administration
- Master of Economics
- Master of Public Management
- Master of Business Administration
- Master of Philosophy
- Doctor of Philosophy
- Doctor of Philosophy in Literature
- Doctor of Laws
- Doctor of Philosophy in Economics
- Doctor of Philosophy in Education

Number of Students Master's: 156, Doctoral: 93

Master's Programs

- Contemporary Cultural Studies**
 - Information Society Culture
 - Modern Human Science
 - Life Healthy Behavioral Science
- Social and Cultural Studies**
 - Asian Social Culture
 - Euroamerican Social Culture
 - International Japanese Culture

Society of Law and Politics

- Legal Society
- International Society

Economics and Management

- Economic Society
- Management Accounting

Doctoral Programs

- Human Developmental Studies**
 - Character Building Culture
 - Modern Educational Culture
- Multicultural Studies**
 - Local Symbiotic Culture
 - International Symbiotic Culture

Multisocial Studies

- Local Symbiotic Society
- International Symbiotic Society

Graduate School of Science and Technology



The Graduate School of Science and Technology is a comprehensive graduate school incorporating science, engineering, and agriculture. After obtaining their master's degree or doctorate, students will be able to play an active role in various social milieu by becoming creative personnel who have mastered not only of highly specialized research skills but a broad range of comprehensive knowledge and ideas as well. There is also a special selection framework for working students, which enables students to take courses over an extended period.



Degrees Offered

- Master of Philosophy
- Master of Science
- Master of Engineering
- Master of Agriculture
- Doctor of Philosophy
- Doctor of Philosophy in Science
- Doctor of Philosophy in Engineering
- Doctor of Philosophy in Agriculture

Number of Students Master's: 964, Doctoral: 185

Master's Programs

Fundamental Sciences

- Physics
- Chemistry
- Mathematical Science

Advanced Materials Science and Technology

- Materials Science and Technology
- Applied Chemistry and Chemical Engineering
- Advanced Mechanical Science and Engineering

Electrical and Information Engineering

- Information Engineering
- Electrical and Electronic Engineering
- Human Sciences and Assistive Technology

Life and Food Sciences

- Life Sciences
- Applied Life and Food Sciences
- Agriculture and Bioresources

Environmental Science and Technology

- Natural Environmental Science
- Environmental Science for Agriculture and Forestry
- Architecture and Civil Engineering
- Earth Science
- Natural Disaster and Environmental Science

Doctoral Programs

Fundamental Sciences

- Physics
- Chemistry
- Mathematical Science

Advanced Materials Science and Technology

- Materials Science and Technology
- Applied Chemistry and Chemical Engineering
- Advanced Mechanical Science and Engineering

Electrical and Information Engineering

- Information Engineering
- Electrical and Electronic Engineering
- Human Sciences and Assistive Technology

Life and Food Sciences

- Life Sciences
- Applied Life and Food Sciences
- Agriculture and Bioresources

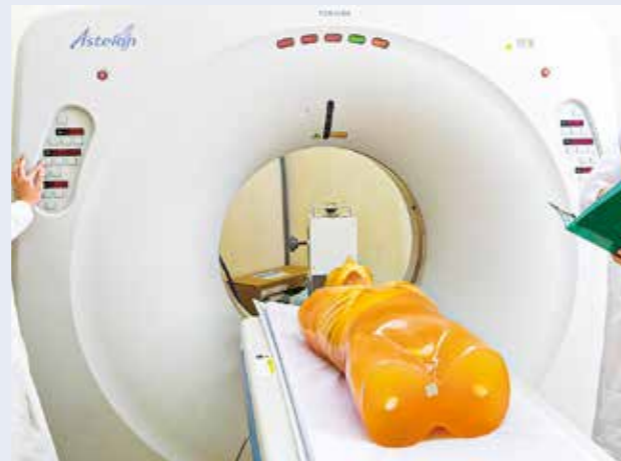
Environmental Science and Technology

- Natural Environmental Science
- Environmental Science for Agriculture and Forestry
- Architecture and Civil Engineering
- Earth Science
- Natural Disaster and Environmental Science

Graduate School of Health Sciences



On a foundation of innovative teaching and research, we develop the theory and practice of the health sciences with a basic philosophy of returning our findings to the broader society and the community. As the first graduate school of health sciences in Niigata Prefecture, we nurture advanced medical specialists who will play an active role in the fields of medical care, health, and welfare, as well as educators and researchers for health sciences. Moreover, we have also been focusing on training personnel who will contribute to medical activities and medical cooperation at the international level.



Degrees Offered ■ Master of Health Sciences ■ Doctor of Philosophy (Health Sciences)

Number of Students Master's: 53, Doctoral: 39

Master's Programs **Health Sciences**

- Nursing
- Radiological Technology
- Medical Technology

Doctoral Programs **Health Sciences**

- Nursing
- Radiological Technology
- Medical Technology

Graduate School of Medical and Dental Sciences



We carry out teaching and research that are in keeping with changes in the environment around medicine and dental medical care, while at the same time striving to create conditions that respond flexibly to the rapid shifts surrounding the medical field as a whole. Our aim is to train researchers in the advanced life sciences, as well as physicians, dentists, and other specialized medical care professionals able to provide high-level medical care.



Degrees Offered ■ Master of Biomedical Science ■ Doctor of Philosophy (Oral Health and Welfare Science)
 ■ Master of Oral Health and Welfare Science ■ Doctor of Philosophy (Medical Science)
 ■ Doctor of Philosophy (Dental Science)
 ■ Doctor of Philosophy

Number of Students Master's: 50, Doctoral: 441

Master's Programs **Biomedical Sciences**
Oral Health and Welfare Science

Doctoral Programs **Molecular and Cellular Medicine**

- Molecular Genetics
- Signal Transduction Research
- Cellular Function
- Molecular Neuroscience and Brain Diseases

Biological Functions and Medical Control

- Homeostatic Regulation and Developments
- Cardiovascular and Vital Control
- Regenerative and Transplant Medicine
- Sensory and Integrative Medicine
- Nephrology
- Functional Neuroscience

Community Disease Control

- Infectious Disease Control and International Medicine
- Community Preventive Medicine
- Informatics and Pharmaceuticals

Oral Life Science

- Oral Health Science
- Oral Biological Science
- Tissue Regeneration and Reconstruction

Oral Health and Welfare Science

Facilities



Brain Research Institute



With the aim of elucidating the pathogenesis and pathology of Alzheimer's disease, brain tumors, and other human brain diseases, the Brain Research Institute was founded fifty years ago as Japan's first neurological research institute affiliated with a national university. The Institute is comprised of several departments where members of the Institute conduct research, analysis, and development of brain function and cranial nerves from a variety of perspectives. These consist of eight departments housed in the three branches of the Basic Neuroscience Branch, the Pathological Neuroscience Branch, and the Clinical Neuroscience Branch, and ten departments housed in two centers, namely the Center for Integrated Human Brain Science and the Center for Bioresource-based Researches. Today, as the aging of the population progresses even cancer and cardiovascular disorders are overcome, the number of people with the kind of age-related brain condition typified by Alzheimer's disease has

doubled, presenting itself as a problem at a societal level. Accordingly, the Brain Research Institute is rising to the challenge of developing innovative treatments and advanced new approaches to combatting these diseases. Moreover, we are also working to expand brain research at the worldwide level by conducting joint studies with major research institutes in Japan and overseas that involve the utilization of brain disease resources (e.g., brain specimens and animal models) and state-of-the-art large-scale equipment (e.g., 7T MRI and next-generation sequencers) owned as a joint usage/research center.



University Medical and Dental Hospital



With a total of 35 departments housing 827 beds in 31 medical departments and four dental departments, the hospital provides high-level and advanced medical care in both medicine and dentistry as an advanced treatment hospital for the region. Since performing Japan's first kidney transplant in 1956, we have conducted a large number of organ transplants, including liver, kidney, and pancreas transplants as well as simultaneous pancreas and kidney transplants. In October 2011, the hospital was designated as a core disaster medical hospital, and we are continuing to enhance our provision of disaster medical care. Moreover, we have been a base hospital for air ambulance since October 2012, and dispatched over 750 flights in response to over 1,000 requests every year. We aim to be a university hospital that practices publicly accessible medical care by continuously promoting the creation of a hospital environment based on our philosophy of "paying the highest regard to human life and personal dignity, providing superior quality medical care and fostering medical staff with a rich sense of humanity."



Research Institute for Natural Hazards and Disaster Recovery



The Research Institute for Natural Hazards and Disaster Recovery has been conducting research activities aimed at building disaster reduction science in mountainous regions on the basis of over forty years of findings from disaster surveys and research conducted in Japan and overseas, as well as academic scholarship concerning disaster recovery. On the other hand, recent years have seen an intensification and magnification of disaster phenomena due to global climate change and the stimulation of tectonic deformation, as well as a significantly higher risk of combined disasters resulting from increased seismic and volcanic activities linked to the Great East Japan Earthquake on March 11, 2011. In response, the Institute reorganized itself into four research divisions in 2015 – the Research Division of Environmental Dynamics, the Research Division of Cascading and

Linked Multi-Hazards, the Research Division of Hazard Mitigation, and the Research Division of Societal Safety Systems – to aim at Niigata University's goal of "establishing a research base for the study of natural hazards and disaster recovery along the Sea of Japan and Asia," and is actively promoting collaborative initiatives and joint research with research institutes in Japan and overseas.



University-wide Organization for Research and Education

Asian Link Research Center



The Asian Link Research Center was founded as University-wide Organization for Research and Education for the entire university in October 2018. In consideration of the fact that Niigata University is based in a hub city on the Sea of Japan, we are conducting interdisciplinary research integrating the fields of humanities and science with an area focus on Japan, East Asia, and the surrounding region. In order to return the fruits of research activities to society, the Center invites prominent researchers to give lectures and hosts international symposia. Our research activities range widely, from investigations into the history of East Asia from the standpoint of Mongolian archaeology to researches the media and industry of anime through intermediate materials.

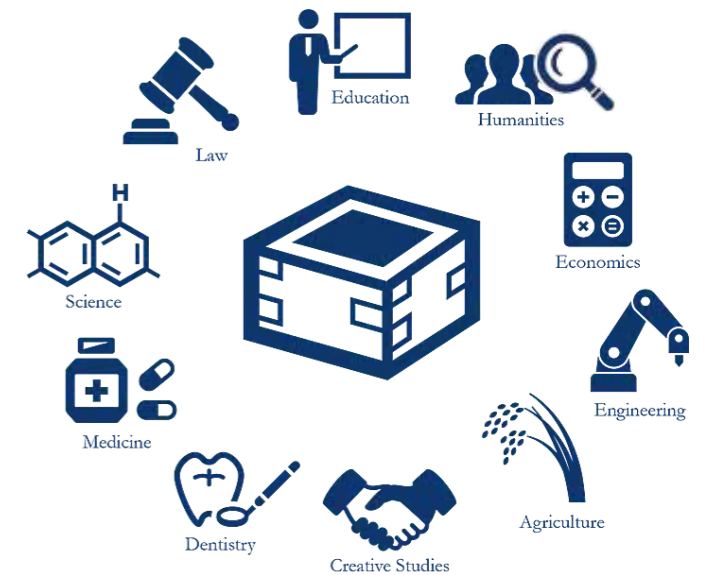


University-wide Organization for Research and Education

Sakeology Center



With the goal of contributing to the formation and development of an international base for the establishment of "Sakeology" as an academic discipline bringing together a wide range of cultural spheres and academic fields related to Japanese sake, Niigata Prefecture, the Niigata Sake Brewers Association, and Niigata University entered into a partnership in May 2017. The Niigata University Sakeology Center was founded in April 2018 to bring this goal to fruition. In January 2020, the Center was reborn as University-wide Organization for Research and Education, so that now, with participation not only by faculty members concerned with sake from across the university but also the cooperation of Niigata Prefecture and the Niigata Sake Brewers Association, we are joining forces to develop projects related to "education, research, the dissemination of information, and international exchanges" concerned with sake.



University-wide Organization for Research and Education

Sado Island Center for Ecological Sustainability



The Sado Island Center for Ecological Sustainability was established in April 2019 by integrating Niigata University's three existing facilities on Sado Island. It aims at conducting unique education and research based on the comprehensive scientific study of forests, satoyama, and sea, making the most of the island's natural environment, which includes primary forests in mountainous areas, coppices and agricultural fields in satoyama, and rich marine ecosystems created by the currents and coastal lines. The Center consists of four divisions (facilities), the Forest Division (University Forest), the Satoyama Division (Research Station for Toki and Ecological Restoration), and the Marine Division (Marine Biological Station), and the Office for Community Design. The establishment of this integrated center strengthens the cooperation and collaboration among these facilities and the partnership with local communities, and opens up further possibilities to develop as a core institution of ecological sustainability science not only for the University but also for other domestic and international institutions for education and scientific research.



Attached Schools

Niigata University has six attached schools in Niigata City and Nagaoka City. In Niigata City, there are an elementary school, a junior high school, and a school for special needs education, each of which engages in research into modes of learning suited to the twenty-first century, including the use of general-purpose thinking tools, teaching aimed at fostering the competencies necessary for future society, and learning through special support service in resource room in an effort to ensure inclusive education. In Nagaoka City, there are a kindergarten, an elementary school, and a junior high school, which cooperatively implement a 12-year integrated educational program within the integrated school building, with a view to understanding the development of children longitudinally. Having been designated as a Research and Development School by the Ministry of Education, Culture, Sports, Science and Technology, the schools are working on today's educational issues with the community, based on the theme of realizing integrated learning. Moreover, as well as promoting exchanges and partnerships, each school is making use of their local environments to promote their own distinctive educational activities.



Global Engagement



Database for NU International Collaborative Activity



As Niigata University has been dedicating to strive to bring global perspective to all its programs and activities, we have promoted collaborative research and education with overseas institutions.

In this database, you can search for educational and research activities by regions/countries or conditions. You can access the database by scanning the QR code above.



G-DORM Student Exchange Program with Mekong Countries



Archaeological Researches on Mongolian Nomadic Dynasties

Overseas Offices

As part of our international strategy, five overseas offices have been established to maintain an international network and further promote international education and research activities.

Name	Location
Beijing Liaison Office	Beijing, China
Sri Lanka Liaison Office	Kandy, Sri Lanka
Moscow Liaison Office	Moscow, Russia
Infectious Diseases Research Center of Niigata University in Myanmar (Established by Graduate School of Medical and Dental Sciences)	Yangon, Myanmar
Office of the International Education Program G-MedEx (Established by Faculty of Medicine)	Krasnoyarsk, Russia



Infectious Diseases Research Center of Niigata University in Yangon, Myanmar (Within National Health Laboratory (NHL))

Liaison Professor of Niigata University

The "Liaison Professor" is selected by the President of Niigata University in order to express appreciation for those who contribute to academic globalization by coordinating with their home university and Niigata University to facilitate education, research and student exchange activities. We hope that Liaison Professors will kindly continue to help us attain our goals of internationally activating our education and research and contributing more to international society. As of September, 2020, there are 23 Liaison Professors from 14 countries. For an updated list, visit our website.



Overseas Partner Institutions



- University-level
- Department-level
- Student Exchange
- Double Degree Program

As of November 1, 2020

Country	Institution	University-level	Department-level	Student Exchange	Double Degree Program
India	Cochin University of Science and Technology	●	●	●	
	Indian Institute of Science	●		●	
	Indian Institute of Space Science and Technology	●		●	
	Indian Institute of Technology Roorkee	●		●	
	Jawaharlal Nehru University		●	●	
	Indonesia	Bandung Institute of Technology		●	
Bogor Agricultural University			●		
College of Foreign Languages STIBA Saraswati			●		
Gadjah Mada University			●		
Hang Tuah University			●		
Hasanuddin University			●	●	
Maranatha Christian University			●		
Prof. Dr. Moestopo University			●		
Trisakti University			●		
Udayana University		●			
Universitas Airlangga			●	●	
Universitas Sumatera Utara			●	●	
University of Indonesia			●		
Cambodia	Royal University of Phnom Penh	●		●	
Singapore	LASALLE College of the Arts		●		
Sri Lanka	University of Peradeniya	●	●	●	
Thailand	Chiang Mai University	●	●	●	●
Chulalongkorn University	●	●	●	●	
Kasetsart University	●	●	●		
Khon Kaen University	●	●	●		
King Mongkut's University of Technology Thonburi	●	●	●	●	
Mahidol University		●	●	●	
Naresuan University	●	●	●	●	
Panyapiwat Institute of Management		●	●		
Prince of Songkla University		●			
Suranaree University of Technology		●			
Surindra Rajabhat University		●			
Thammasat University	●	●	●		
University of Phayao		●			
Korea	Andong Science College		●	●	
	Dongguk University		●	●	
	Hallym University		●	●	
	Hanbat National University		●	●	
	Hanyang University	●	●	●	●
	Inha University	●	●	●	
	Kangnung National University		●		
	Kangwon National University		●	●	
	Korea Brain Research Institute		●		
	Kyungpook National University		●	●	
	Pukyong National University		●	●	●
	Seoul National University		●		
	Seoul National University of Science and Technology		●	●	
	Sungkyunkwan University		●	●	
	Yeungnam University		●	●	
Yonsei University		●		●	
China	Academy of Mathematics and Systems Science, Chinese Academy of Sciences		●	●	
	Beihang University		●		
	Beijing Foreign Studies University		●	●	
	Beijing Normal University		●		
	Beijing Normal University Zhuhai	●		●	
	Beijing Union University		●	●	
	Capital Medical University		●		
	Capital Normal University		●	●	
	Central China Normal University	●	●	●	
	China Agricultural University	●		●	
	China Foreign Affairs University		●	●	
	China University of Geosciences, Beijing	●	●	●	●
	China University of Geosciences, Wuhan	●	●	●	●
	Dalian University of Technology	●		●	
	East China Normal University		●		

East China University of Science and Technology		●			
Fudan University		●	●		
Harbin Institute of Technology	●	●	●		
Harbin Medical University	●	●	●		
Harbin Normal University		●			
Heilongjiang University	●		●		
Hong Kong Shue Yan University		●			
Huaqiao University		●	●		
Huazhong University of Science and Technology	●	●	●		
Hubei Medical College		●			
Hubei University	●		●		
Hunan University	●		●		
Inner Mongolia Agricultural University		●	●		
Jilin University		●			
Kunming Medical College		●			
Minzu University of China	●		●		
Nanjing Institute of Geology and Palaeontology, Chinese Academy of Sciences		●	●	●	
Ningxia University		●	●		
Northeast Agricultural University		●	●		
Northeast Asia Research Institute, Heilongjiang Provincial Academy of Social Sciences		●			
Northeast Normal University	●		●		
Northeastern University	●	●	●	●	
Ocean University of China		●	●		
Peking University	●	●	●		
Qiqihar University		●	●		
Renmin University of China		●	●	●	
Shandong University		●	●		
Shanghai Second Medical University		●	●		
Shanghai University		●	●		
South China Normal University		●			
The Hong Kong University of Science and Technology		●	●		
Tianjin Foreign Studies University	●		●		
Tsinghua University	●	●	●		
University of Hong Kong		●			
University of Science and Technology of China		●	●		
Wuhan University of Science and Technology		●	●		
Xi'an Jiaotong University	●		●		
Xishuangbanna Tropical Botanical Garden, Chinese Academy of Sciences		●			
Yanbian University		●	●		
Taiwan	Chang Jung Christian University		●	●	
Chung-Yuan Christian University	●	●	●	●	
Feng Chia University		●	●		
I-Shou University	●		●		
National Central University	●	●	●	●	
National Changhua University of Education	●	●	●	●	
National Cheng Kung University	●	●	●	●	
National Dong Hwa University		●			
National Kaohsiung Normal University	●		●		
National Quemoy University		●	●		
National Sun Yat-sen University		●	●		
National Taichung University of Science and Technology		●	●		
National Taipei University of Business		●	●		
National Taiwan Normal University	●		●	●	
National Taiwan University		●			
National Tsing Hua University		●	●		
National University of Kaohsiung	●		●		
National Yang-Ming University		●	●		
Providence University	●		●		
Soochow University	●		●		
Southern Taiwan University of Science and Technology	●		●		
Taipei Medical University		●			
Wenzao Ursuline University of Languages	●		●		
Bangladesh	Bangabandhu Sheikh Mujib Medical University		●		
Bangladesh Agricultural University		●		●	
City Dental College		●			
Dhaka Dental College		●			
Jahangirnagar University		●			
North South University		●			
Sylhet Agricultural University		●	●		
University Dental College		●			

Philippines	Ateneo de Manila University	●		●	
	Manila Central University		●		
	Mindanao State University, Iligan Institute of Technology		●	●	
	University of the East		●		
	University of the Philippines		●		
Viet Nam	Hanoi Medical University		●		
	Hanoi National University of Education		●	●	
	Hanoi University of Science and Technology	●	●	●	●
	Tay Nguyen University		●	●	
	University of Medicine and Pharmacy at HoChiMinh City		●		
Malaysia	Monash University Malaysia		●	●	
	National University of Malaysia (Universiti Kebangsaan Malaysia)		●	●	
	Universiti Tunku Abdul Rahman	●		●	
Myanmar	Ministry of Health, Myanmar		●	●	
	University of Dental Medicine, Mandalay		●		
	University of Dental Medicine, Yangon		●		
	University of Medicine 1, Yangon		●	●	
	University of Medicine 2, Yangon		●	●	
	University of Medicine, Mandalay		●		
Mongolia	Mongolian Academy of Sciences		●	●	
	Mongolian National University of Medical Sciences		●	●	
	Mongolian National University of Education	●	●	●	
	Mongolian National University of Medical Sciences	●			
	Mongolian University of Life Sciences	●	●	●	
	Mongolian University of Science and Technology	●		●	
	National University of Mongolia	●		●	
Laos	The National University of Laos	●		●	
Australia	University of Technology Sydney	●		●	
	Charles Sturt University		●		
	University of Newcastle		●	●	
	University of Sydney		●	●	
New Zealand	University of Otago		●		
United States of America	California State University, Sonoma	●		●	
Johns Hopkins University		●			
Kansas State University	●	●	●		
Louisiana State University		●			
Roswell Park Cancer Institute Corporation	●				
Southeastern Louisiana University		●	●		
State University of New York at Fredonia		●	●		
University of California, Davis	●				
University of California, San Francisco		●			
University of Illinois at Chicago Campus	●	●			
University of Minnesota	●				
University of Oregon	●	●			
University of Pennsylvania		●			
University of Rhode Island	●		●		
University of Washington		●			
Canada	Concordia University		●		
	University of Alberta	●	●	●	
	University of British Columbia		●	●	
	University of Toronto		●	●	
Brazil	University of NOVAFAPI		●		
	University of São Paulo		●		
Peru	Scientific University of the South		●		
Mexico	Coahuila Autonomous University		●		
Italy	University of L'Aquila	●		●	
	University of Milan	●		●	
United Kingdom	University of Bristol	●	●	●	

University of Leicester		●	●		
University of Sheffield	●				
Austria	Johannes Kepler University		●	●	
	Technische Universität Wien		●	●	
Netherlands	Wageningen University and Research Centre	●			
Croatia	University of Split	●			
Sweden	Malmö University		●		
	Umeå Plant Science Centre		●		
Spain	Complutense University of Madrid	●			
	Public University of Navarre	●	●	●	
Denmark	Aarhus University		●		
Germany	Bielefeld University	●	●	●	
	Darmstadt University of Technology	●	●	●	
	Otto-von-Guericke University Magdeburg	●	●	●	
	Ruhr University Bochum		●	●	
University of Munster	●	●	●		
Hungary	University of Debrecen and Institute of Nuclear Research of the Hungarian Academy of Sciences		●	●	
France	Ecole Normale Supérieure de Lyon		●		
	University Bordeaux Montaigne		●	●	
	University of Bordeaux	●	●	●	
	University of Nantes	●	●	●	
Poland	Kozminski University	●	●	●	
	University of Lodz	●	●	●	
Lithuania	Vilnius University	●		●	
Romania	"Carol Davila" University of Medicine and Pharmacy		●		
Russia	Far Eastern Federal University	●	●	●	
Far Eastern State Agricultural University	●		●		
Far Eastern State Medical University		●	●	●	
Far Eastern State Transport University		●	●		
Far Eastern State University of Humanities		●			
Federal State Budget Scientific Institution "All-Russian Scientific Research Institute of Soybean", Russia		●			
Federal State Budget Scientific Institution "Federal Research Center of Agribiotechnology of the Far East named after A.K. Chaika", Russia		●			
I.M. Sechenov First Moscow State Medical University	●				
Kazan Federal University		●	●		
Kazan State Medical University		●	●		
Khabarovsk State Academy of Economics and Law		●	●		
Krasnoyarsk State Medical University		●	●	●	
Moscow State University	●	●	●		
North-Eastern Federal University		●	●		
Pacific National University	●				
Pacific State Medical University		●	●	●	
Primorskaya State Academy of Agriculture	●		●		
Saint-Petersburg State University	●		●		
Saint-Petersburg State University of Economics		●	●		
Turkey	Ankara University	●	●	●	
	Ege University	●		●	
	Middle East Technical University	●	●	●	
Egypt	Cairo University		●	●	
Madagascar	University of Antananarivo	●			
(Asia Pacific)	University Mobility in Asia and the Pacific	●		●	

Study at Niigata University



Niigata University promises a first-class education and a quality student experience.

Study Year

First Semester (Spring Semester):

April 1 – September 30
(Most classes start in early April and end in early August)

Second Semester (Fall Semester):

October 1 – March 31
(Most classes start in early October and end in early February)



Student Support

Students at Niigata University enjoy a diverse campus life in a safe, comfortable, and supportive environment.

Fees/Scholarships

Niigata University offers a range of scholarships for international students.

Student Life

We will help you settle in and adapt to life studying and living in Niigata, including assistance with visas, housing, and health insurance.



Admission Flow Chart



Niigata University provides a variety of study options for degree-seeking students as well as non-degree-students in both undergraduate and graduate programs. This admission flow chart will help you identify the most suitable option for you.

Programs

Degree Programs (Undergraduate)



Under 10 Faculties, we offer various degree-granting programs in a wide range of disciplines, including humanities and social sciences, natural sciences as well as medical and dental sciences.

Non-Degree Programs (Research Student)



Those wishing to pursue research on a certain topic at undergraduate or graduate level can enroll as Research Students.

Niigata University Short-term Program



Niigata University offers programs of a few week's duration taught in English. Through these programs, students can encounter and explore the traditions and culture of Niigata and Japan as a whole.

Degree Programs (Graduate)



We provide various research-based programs under five Graduate Schools. Programs include Master's and Doctoral programs.

Non-Degree Programs (Exchange Student Program)



Our Programs for Exchange Students from our partner universities include one-semester and two-semester options. Students from our partner universities have opportunities to meet students from a diverse range of backgrounds.

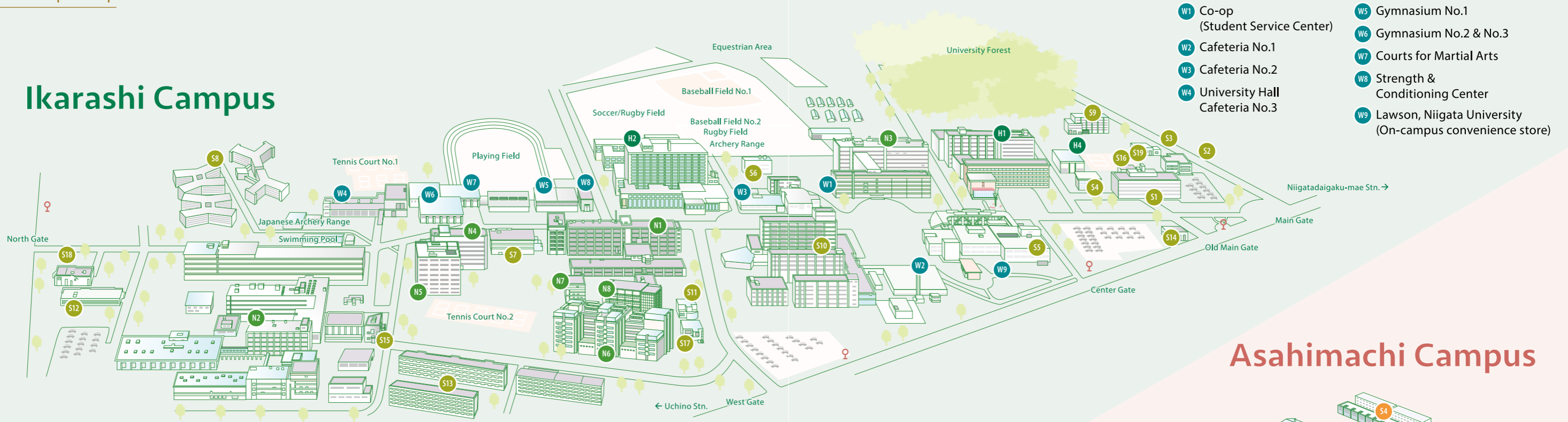
Japanese Language Programs



Our highly-experienced instructors offer programs ranging from "Learning Japanese" to "Learning in Japanese" at different levels.



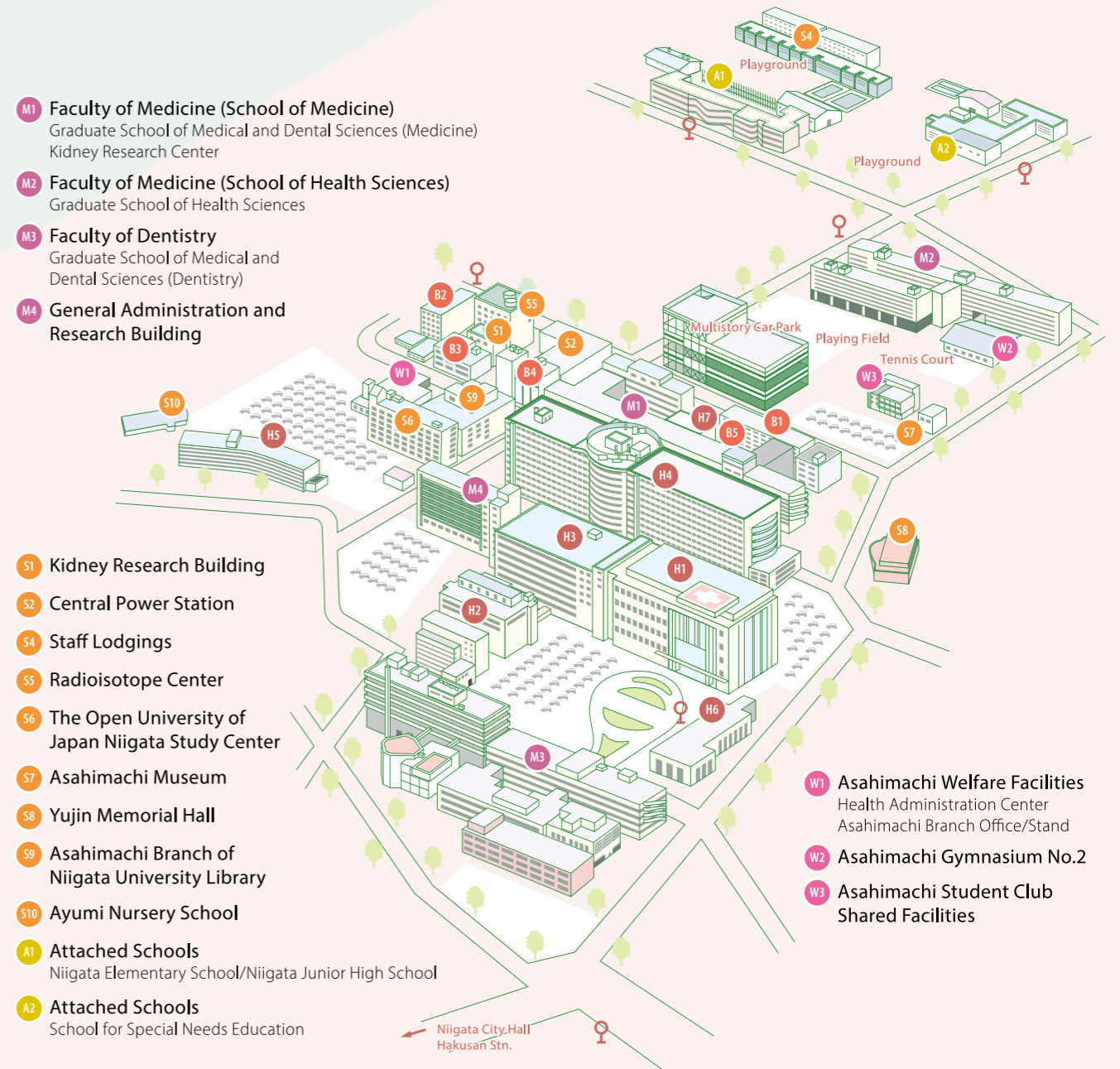
Ikarashi Campus



- H1** Faculty of Law
Faculty of Economic Sciences
- H2** Faculty of Education
Special Course for School Nurse-Teachers
Professional School of Teacher Education
Center for Teaching Profession
- H4** Graduate School of Modern Society and Culture
- N1** Faculty of Science
Science Museum
- N2** Faculty of Engineering
- N3** Faculty of Agriculture
- N4** Graduate School of Science and Technology
- N5** Information and Technology University Institute Center
- N6** Science of Matter and Industrial Science University Institute Center
- N7** Life Science and Environmental Science University Institute Center
- N8** Environmental Science and Energy Science University Institute Center
- S1** Administration Bureau Building
- S2** Shofu Hall
- S3** Yuho Hall (Guest House)
- S4** Health Administration Center
- S5** University Library
- S6** Center for Academic Information Service
- S7** Research Center for Natural Hazards and Disaster Recovery
- S8** Residence Halls
- S9** International House
- S10** Advanced Education and Research Building
Faculty of Humanities/College of Creative Studies
Student Support Center/Student Support Desk/International Office
- S11** Joint Research Laboratory 2
- S12** Joint Research Laboratory 1
- S13** Staff Lodgings
- S14** Guard House
- S15** Yukyu Hall
- S16** Gender Equality Office
- S17** Research Collaboration and Promotion Office
- S18** Office for Environment and Safety
- S19** Risk Management Headquarters

- H1** Medical & Dental Hospital
Outpatients Examination Building
- H2** Medical & Dental Hospital
West Examination Building
- H3** Medical & Dental Hospital
Central Examination Building
- H4** Medical & Dental Hospital Ward
- H5** Nursing Staff Dormitory
- H6** Amenity Mall
- H7** Niigata Medical Professionals
Development Center
- B1** Brain Research Institute
- B2** Center for Integrated
Human Brain Science
- B3** Bioresource Science Branch
Genome Science Building
- B4** Bioresource Science Branch
Animal Science Building
- B5** Center for Bioresource-based
Researches

Asahimachi Campus



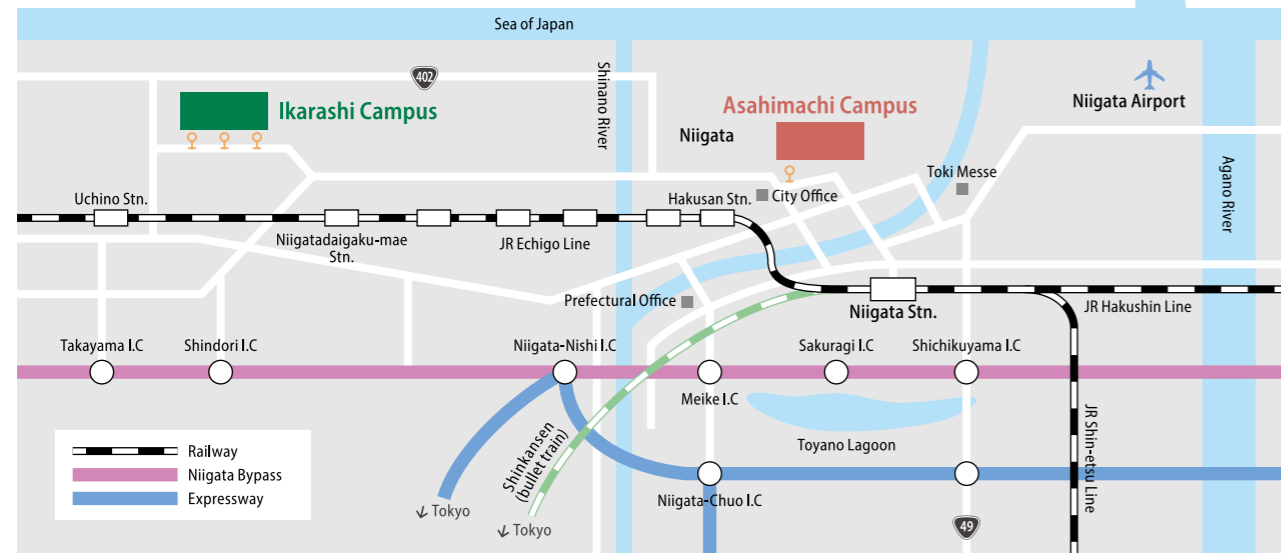
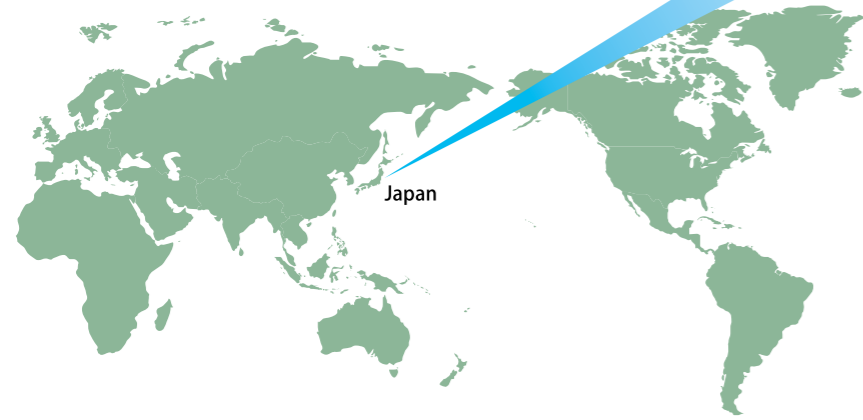
- M1** Faculty of Medicine (School of Medicine)
Graduate School of Medical and Dental Sciences (Medicine)
Kidney Research Center
- M2** Faculty of Medicine (School of Health Sciences)
Graduate School of Health Sciences
- M3** Faculty of Dentistry
Graduate School of Medical and
Dental Sciences (Dentistry)
- M4** General Administration and
Research Building

- S1** Kidney Research Building
- S2** Central Power Station
- S4** Staff Lodgings
- S5** Radioisotope Center
- S6** The Open University of
Japan Niigata Study Center
- S7** Asahimachi Museum
- S8** Yujin Memorial Hall
- S9** Asahimachi Branch of
Niigata University Library
- S10** Ayumi Nursery School
- A1** Attached Schools
Niigata Elementary School/Niigata Junior High School
- A2** Attached Schools
School for Special Needs Education

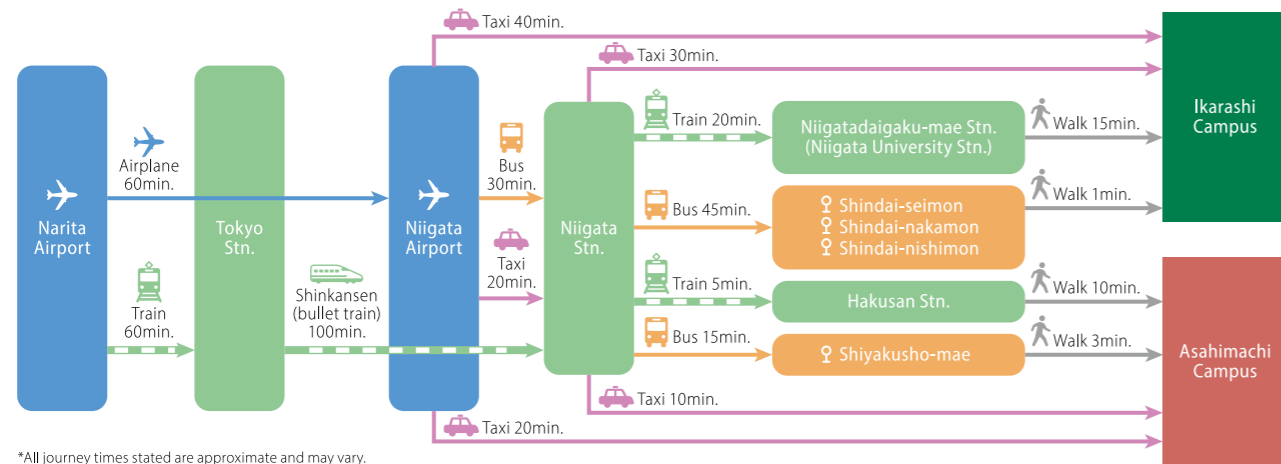
- W1** Asahimachi Welfare Facilities
Health Administration Center
Asahimachi Branch Office/Stand
- W2** Asahimachi Gymnasium No.2
- W3** Asahimachi Student Club
Shared Facilities

Campus Locations

Niigata University is located in Niigata, a city approximately 300km north of Tokyo with multiple public transport options conveniently nearby.



Directions to the University



*All journey times stated are approximate and may vary.

About Niigata City

Niigata City, the capital of Niigata Prefecture, has a population of about 800,000, and is the largest city on the Sea of Japan coast of Honshu, Japan's main island. Niigata is a modern city with a long tradition. Niigata port has existed since ancient times, and was one of the five ports open to international trade, alongside Yokohama and Kobe, at the end of Edo Period. The city is located 300 kilometers northwest of Tokyo, a two-hour journey by bullet train, making it a major domestic and international hub for air, rail, sea, and land transportation. While the city enables people to lead their lives in comfort and convenience, Japan's pristine landscapes can still be found nearby, and traditional culture remains untouched.



Attractions

As Niigata is surrounded by sea and mountains, you will find a peaceful natural environment once you venture out from the convenient city. People enjoy hiking and birdwatching in beautiful mountains and wetlands registered under the Ramsar Convention, and watching the sun set over the sea.

Rich Food Culture

Niigata is well-known as one of the country's best culinary destinations, given its bountiful grains and fresh seafood. Niigata Sake is considered one of the best sakes in Japan thanks to high quality rice, smooth water from the mountains, and the technique of the artisan brewers. Try and enjoy the best-quality Japanese cuisine.



Climate in Niigata City

Niigata is located on the northwest side of Honshu Island, and the climate broadly corresponds to Central European weather conditions. It is cold and wet in winter, but the summer months are beautiful and residents can experience four distinctive seasons. Although Niigata Prefecture is known throughout Japan for its heavy snowfall, in Niigata City, the temperature generally does not drop below -5 °C (23 °F), and most of the city's year-round precipitation is in the form of rainfall.

